

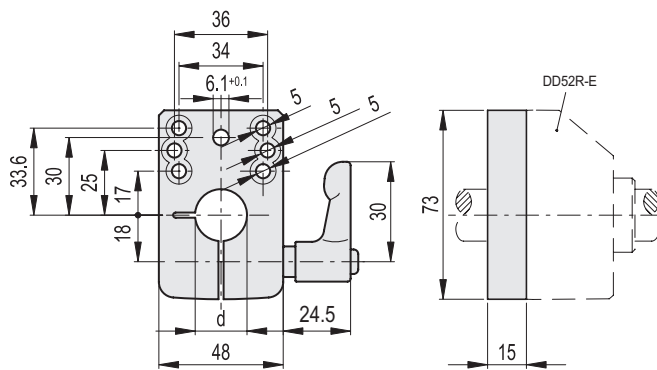
**MATERIAL**

Die-cast zinc alloy bases for spindle locking, epoxy resin coating, black colour, matte finish.

GN 302.1 adjustable handle with lever body in die-cast zinc alloy, black colour and AISI 303 stainless steel clamping element.

**FEATURES AND APPLICATIONS**

BSA52-E locking bases allow an easy and quick locking of the spindles after their positioning. Ø 6.1 mm hole to fit the referring pin of the indicator. Handle positioned either on the right or on the left. Fitting to the machine by means of two cylindrical-head screws (not included in the supply).



Code	Description	dF9	⚖️
CE.99091	BSA52-E-12	12	234
CE.99093	BSA52-E-14	14	232
CE.99094	BSA52-E-15	15	230
CE.99095	BSA52-E-16	16	228
CE.99099	BSA52-E-20	20	226