

- 1
- 2
- 3
- 4
- 5
- 6
- 7
- 8
- 9
- 10
- 11
- 12
- 13
- 14
- 15
- 16
- 17
- 18
- 19

Accessories for hydraulic systems

**COVER**

Polyamide based (PA) technopolymer, semi-matte finish.

- SFP.....: RAL 2004 orange, marked "OIL".
- SFP.....-C9: RAL 9005 black colour, marked "OIL".
- SFP.....-C2-N: RAL 2004 orange, without "OIL" mark.
- SFP.....-C9-N: RAL 9005 black colour, without "OIL" mark.

**THREADED FITTING**

Polyamide based (PA) technopolymer, black colour, semi-matte finish.

**PACKING RING**

NBR synthetic rubber flat washer.

**SPLASH GUARD**

Technopolymer.

**STANDARD EXECUTIONS**

- **SFP.**: without air filter (black splash guard).
- **SFP+F-FIL.**: with "tech-fil" air filter in zinc-plated steel wire (orange splash guard).
- **SFP+F-FOAM.**: with "tech-foam" air filter in polyurethane foam mesh (polyester base), air filtration 40 µ (grey splash guard).
- **SFP-BA+F.**: with "tech-foam" air filter in polyurethane foam mesh (polyester base), air filtration 40 µ (grey splash guard).

Zinc-plated steel sheet bayonet.

Chrome-plated steel safety chain.

**MAXIMUM CONTINUOUS WORKING TEMPERATURE**

100°C.

**FEATURES AND APPLICATIONS**

SFP breather caps come complete with splash guard device (Elesa original design) that prevents oil loss and are particularly suitable for use where oil is violently agitated and could be splashed against breather cap.



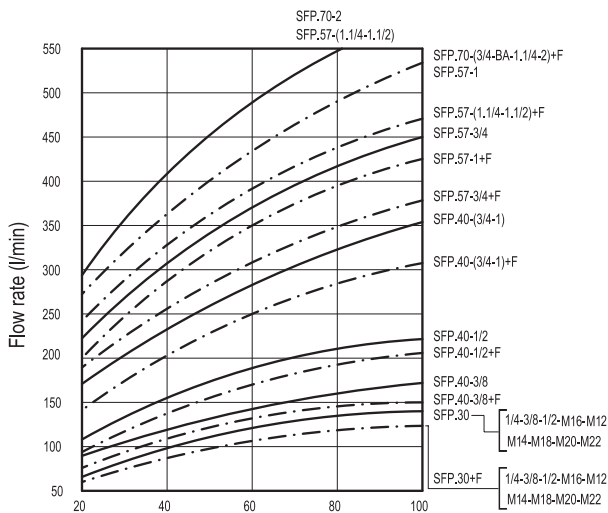
Elesa Original design

**TECHNICAL DATA**

Air flow rate for the different executions of breather caps can be obtained from the diagram on the basis of the difference of air pressure inside and outside the reservoir.

**SPECIAL EXECUTION ON REQUEST**

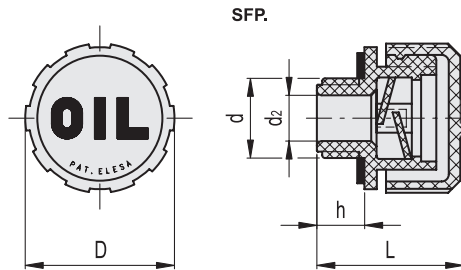
Threaded connector also with NPT thread (National Taper Pipe Thread - ANSI-ASME B1-20) for the codes marked with # in the table.



**Operating layout**



Conversion Table 1 mm = 0.039 inch	
D	
mm	inch
31	1.22
42	1.65
57	2.24
70	2.76



## SFP.

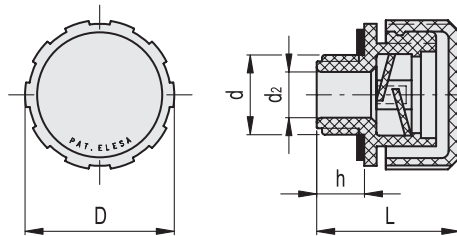
## METRIC

Code	Description	D	d	L	d2	h	⚖
54141	SFP.30-12x1.5	31	M12x1.5	29.5	6	9.5	10
54141-C9	SFP.30-12x1.5-C9	31	M12x1.5	29.5	6	9.5	10
54161	SFP.30-14x1.5	31	M14x1.5	29.5	8	9.5	10
54161-C9	SFP.30-14x1.5-C9	31	M14x1.5	29.5	8	9.5	10
53941	SFP.30-16x1.5	31	M16x1.5	29.5	10	9.5	12
53941-C9	SFP.30-16x1.5-C9	31	M16x1.5	29.5	10	9.5	12
53961	SFP.30-18x1.5	31	M18x1.5	29.5	10	9.5	12
53961-C9	SFP.30-18x1.5-C9	31	M18x1.5	29.5	10	9.5	12
53981	SFP.30-20x1.5	31	M20x1.5	29.5	12	9.5	12
53981-C9	SFP.30-20x1.5-C9	31	M20x1.5	29.5	12	9.5	12
53991	SFP.30-22x1.5	31	M22x1.5	29.5	12	9.5	13
53991-C9	SFP.30-22x1.5-C9	31	M22x1.5	29.5	12	9.5	13
53935	SFP.30-1/4#	31	G 1/4	29.5	8	9.5	12
53935-C9	SFP.30-1/4-C9#	31	G 1/4	29.5	8	9.5	12
54001	SFP.30-3/8	31	G 3/8	29.5	10	9.5	12
54001-C9	SFP.30-3/8-C9	31	G 3/8	29.5	10	9.5	12
54101	SFP.30-1/2	31	G 1/2	29.5	12	9.5	12
54101-C9	SFP.30-1/2-C9	31	G 1/2	29.5	12	9.5	12
56651	SFP.40-3/8#	42	G 3/8	36.5	10	11.5	22
56651-C9	SFP.40-3/8-C9#	42	G 3/8	36.5	10	11.5	22
56671	SFP.40-1/2#	42	G 1/2	36.5	12	11.5	24
56671-C9	SFP.40-1/2-C9#	42	G 1/2	36.5	12	11.5	24
54201	SFP.40-3/4#	42	G 3/4	36.5	18	11.5	26
54201-C9	SFP.40-3/4-C9#	42	G 3/4	36.5	18	11.5	25
54301	SFP.40-1	42	G 1	36.5	18	11.5	26
54301-C9	SFP.40-1-C9	42	G 1	36.5	18	11.5	26
56701	SFP.57-3/4#	57	G 3/4	42	18	14	43
56701-C9	SFP.57-3/4-C9#	57	G 3/4	42	18	14	43
56731	SFP.57-1	57	G 1	42	23	14	43
56731-C9	SFP.57-1-C9	57	G 1	42	23	14	43
54401	SFP.57-1¼	57	G 1 1/4	44	28	16	46
54401-C9	SFP.57-1¼-C9	57	G 1 1/4	44	28	16	46
54501	SFP.57-1½	57	G 1 1/2	44	28	16	47
54501-C9	SFP.57-1½-C9	57	G 1 1/2	44	28	16	46
54876	SFP.70-2	70	G 2	59	23	17	91
54876-C9	SFP.70-2-C9	70	G 2	59	23	17	91

# Types available on request with NPT thread (National Taper Pipe Thread - ANSI-ASME B1-20).

- 1
- 2
- 3
- 4
- 5
- 6
- 7
- 8
- 9
- 10
- 11
- 12
- 13
- 14
- 15
- 16
- 17
- 18
- 19

Conversion Table	
1 mm = 0.039 inch	
D	
mm	inch
31	1.22
42	1.65
57	2.24
70	2.76



SFP-N

METRIC

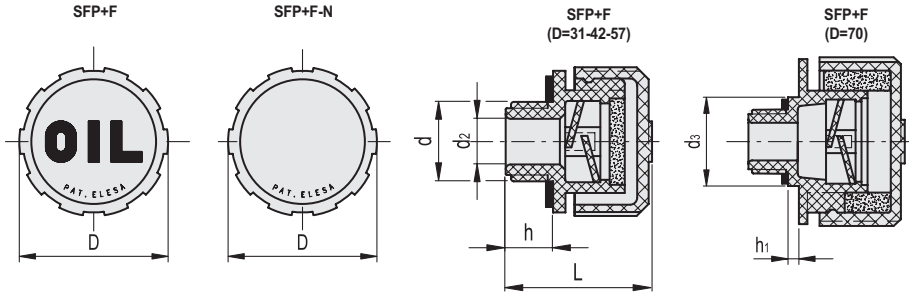
SFP-N

Code	Description	D	d	L	d2	h	ΔΔ
54141-C2-N	SFP.30-12x1.5-C2-N	31	M12x1.5	29.5	6	9.5	10
54141-C9-N	SFP.30-12x1.5-C9-N	31	M12x1.5	29.5	6	9.5	10
54161-C2-N	SFP.30-14x1.5-C2-N	31	M14x1.5	29.5	8	9.5	10
54161-C9-N	SFP.30-14x1.5-C9-N	31	M14x1.5	29.5	8	9.5	10
53941-C2-N	SFP.30-16x1.5-C2-N	31	M16x1.5	29.5	10	9.5	12
53941-C9-N	SFP.30-16x1.5-C9-N	31	M16x1.5	29.5	10	9.5	12
53961-C2-N	SFP.30-18x1.5-C2-N	31	M18x1.5	29.5	10	9.5	12
53961-C9-N	SFP.30-18x1.5-C9-N	31	M18x1.5	29.5	10	9.5	12
53981-C2-N	SFP.30-20x1.5-C2-N	31	M20x1.5	29.5	12	9.5	12
53981-C9-N	SFP.30-20x1.5-C9-N	31	M20x1.5	29.5	12	9.5	12
53991-C2-N	SFP.30-22x1.5-C2-N	31	M22x1.5	29.5	12	9.5	13
53991-C9-N	SFP.30-22x1.5-C9-N	31	M22x1.5	29.5	12	9.5	13
53935-C2-N	SFP.30-1/4-C2-N#	31	G 1/4	29.5	8	9.5	12
53935-C9-N	SFP.30-1/4-C9-N#	31	G 1/4	29.5	8	9.5	12
54001-C2-N	SFP.30-3/8-C2-N	31	G 3/8	29.5	10	9.5	12
54001-C9-N	SFP.30-3/8-C9-N	31	G 3/8	29.5	10	9.5	12
54101-C2-N	SFP.30-1/2-C2-N	31	G 1/2	29.5	12	9.5	12
54101-C9-N	SFP.30-1/2-C9-N	31	G 1/2	29.5	12	9.5	12
56651-C2-N	SFP.40-3/8-C2-N#	42	G 3/8	36.5	10	11.5	23
56651-C9-N	SFP.40-3/8-C9-N#	42	G 3/8	36.5	10	11.5	22
56671-C2-N	SFP.40-1/2-C2-N#	42	G 1/2	36.5	12	11.5	24
56671-C9-N	SFP.40-1/2-C9-N#	42	G 1/2	36.5	12	11.5	24
54201-C2-N	SFP.40-3/4-C2-N#	42	G 3/4	36.5	18	11.5	25
54201-C9-N	SFP.40-3/4-C9-N#	42	G 3/4	36.5	18	11.5	25
54301-C2-N	SFP.40-1-C2-N	42	G 1	36.5	18	11.5	26
54301-C9-N	SFP.40-1-C9-N	42	G 1	36.5	18	11.5	26
56701-C2-N	SFP.57-3/4-C2-N#	57	G 3/4	42	18	14	43
56701-C9-N	SFP.57-3/4-C9-N#	57	G 3/4	42	18	14	43
56731-C2-N	SFP.57-1-C2-N	57	G 1	42	23	14	43
56731-C9-N	SFP.57-1-C9-N	57	G 1	42	23	14	43
54401-C2-N	SFP.57-1 1/4-C2-N	57	G 1 1/4	44	28	16	46
54401-C9-N	SFP.57-1 1/4-C9-N	57	G 1 1/4	44	28	16	46
54501-C2-N	SFP.57-1 1/2-C2-N	57	G 1 1/2	44	28	16	46
54501-C9-N	SFP.57-1 1/2-C9-N	57	G 1 1/2	44	28	16	46
54876-C2-N	SFP.70-2-C2-N	70	G 2	59	23	17	91
54876-C9-N	SFP.70-2-C9-N	70	G 2	59	23	17	91

Accessories for hydraulic systems

8 # Types available on request with NPT thread (National Taper Pipe Thread - ANSI-ASME B1-20).

Conversion Table 1 mm = 0.039 inch	
D	
mm	inch
31	1.22
42	1.65
57	2.24
70	2.76



SFP+F-FIL

METRIC

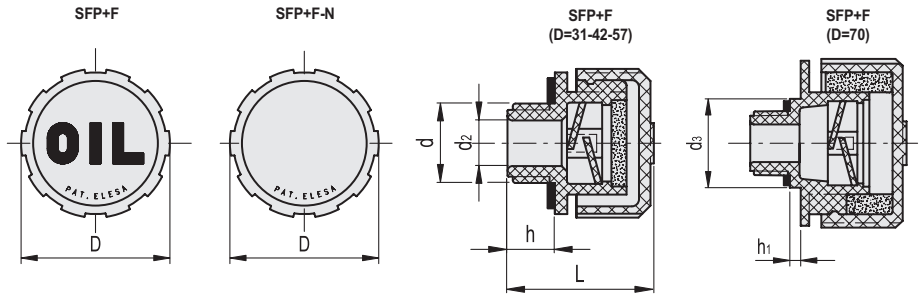
Code	Description	D	d	L	d2	h	⚖
54151	SFP.30-12x1.5+F FIL	31	M12x1.5	29.5	6	9.5	10
54151-C9	SFP.30-12x1.5+F FIL-C9	31	M12x1.5	29.5	6	9.5	10
54171	SFP.30-14x1.5+F FIL	31	M14x1.5	29.5	8	9.5	10
54171-C9	SFP.30-14x1.5+F FIL-C9	31	M14x1.5	29.5	8	9.5	10
53951	SFP.30-16x1.5+F FIL	31	M16x1.5	29.5	10	9.5	13
53951-C9	SFP.30-16x1.5+F FIL-C9	31	M16x1.5	29.5	10	9.5	13
53971	SFP.30-18x1.5+F FIL	31	M18x1.5	29.5	10	9.5	14
53971-C9	SFP.30-18x1.5+F FIL-C9	31	M18x1.5	29.5	10	9.5	14
53986	SFP.30-20x1.5+F FIL	31	M20x1.5	29.5	12	9.5	14
53986-C9	SFP.30-20x1.5+F FIL-C9	31	M20x1.5	29.5	12	9.5	14
53996	SFP.30-22x1.5+F FIL	31	M22x1.5	29.5	12	9.5	16
53996-C9	SFP.30-22x1.5+F FIL-C9	31	M22x1.5	29.5	12	9.5	16
53937	SFP.30-1/4+F FIL	31	G 1/4	29.5	8	9.5	13
53937-C9	SFP.30-1/4+F FIL-C9	31	G 1/4	29.5	8	9.5	13
54021	SFP.30-3/8+F FIL	31	G 3/8	29.5	10	9.5	13
54021-C9	SFP.30-3/8+F FIL-C9	31	G 3/8	29.5	10	9.5	13
54121	SFP.30-1/2+F FIL	31	G 1/2	29.5	12	9.5	14
54121-C9	SFP.30-1/2+F FIL-C9	31	G 1/2	29.5	12	9.5	14
56661	SFP.40-3/8+F FIL	42	G 3/8	36.5	10	11.5	28
56661-C9	SFP.40-3/8+F FIL-C9	42	G 3/8	36.5	10	11.5	28
56681	SFP.40-1/2+F FIL	42	G 1/2	36.5	12	11.5	29
56681-C9	SFP.40-1/2+F FIL-C9	42	G 1/2	36.5	12	11.5	29
54221	SFP.40-3/4+F FIL	42	G 3/4	36.5	18	11.5	30
54221-C9	SFP.40-3/4+F FIL-C9	42	G 3/4	36.5	18	11.5	30
54321	SFP.40-1+F FIL	42	G 1	36.5	18	11.5	32
54321-C9	SFP.40-1+F FILC9	42	G 1	36.5	18	11.5	32
56711	SFP.57-3/4+F FIL	57	G 3/4	42	18	14	51
56711-C9	SFP.57-3/4+F FIL-C9	57	G 3/4	42	18	14	51
56741	SFP.57-1+F FIL	57	G 1	42	23	14	52
56741-C9	SFP.57-1+F FIL-C9	57	G 1	42	23	14	52
54421	SFP.57-1¼+F FIL	57	G 1 1/4	44	28	16	55
54421-C9	SFP.57-1¼+F FIL-C9	57	G 1 1/4	44	28	16	55
54521	SFP.57-1½+F FIL	57	G 1 1/2	44	28	16	56
54521-C9	SFP.57-1½+F FIL-C9	57	G 1 1/2	44	28	16	56



Accessories for hydraulic systems

- 1
- 2
- 3
- 4
- 5
- 6
- 7
- 8
- 9
- 10
- 11
- 12
- 13
- 14
- 15
- 16
- 17
- 18
- 19
- 10

Conversion Table	
1 mm = 0.039 inch	
D	
mm	inch
31	1.22
42	1.65
57	2.24
70	2.76



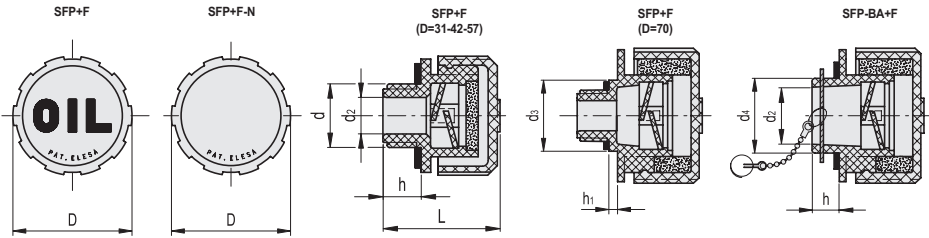
**METRIC**

**SFP+F-FIL-N**

Code	Description	D	d	L	d2	h	⚖
54151-C2-N	SFP.30-12x1.5+F FIL-C2-N	31	M12x1.5	29.5	6	9.5	10
54151-C9-N	SFP.30-12x1.5+F FIL-C9-N	31	M12x1.5	29.5	6	9.5	10
54171-C2-N	SFP.30-14x1.5+F FIL-C2-N	31	M14x1.5	29.5	8	9.5	10
54171-C9-N	SFP.30-14x1.5+F FIL-C9-N	31	M14x1.5	29.5	8	9.5	10
53951-C2-N	SFP.30-16x1.5+F FIL-C2-N	31	M16x1.5	29.5	10	9.5	13
53951-C9-N	SFP.30-16x1.5+F FIL-C9-N	31	M16x1.5	29.5	10	9.5	13
53971-C2-N	SFP.30-18x1.5+F FIL-C2-N	31	M18x1.5	29.5	10	9.5	14
53971-C9-N	SFP.30-18x1.5+F FIL-C9-N	31	M18x1.5	29.5	10	9.5	14
53986-C2-N	SFP.30-20x1.5+F FIL-C2-N	31	M20x1.5	29.5	12	9.5	14
53986-C9-N	SFP.30-20x1.5+F FIL-C9-N	31	M20x1.5	29.5	12	9.5	14
53996-C2-N	SFP.30-22x1.5+F FIL-C2-N	31	M22x1.5	29.5	12	9.5	16
53996-C9-N	SFP.30-22x1.5+F FIL-C9-N	31	M22x1.5	29.5	12	9.5	16
53937-C2-N	SFP.30-1/4+F FIL-C2-N	31	G 1/4	29.5	8	9.5	13
53937-C9-N	SFP.30-1/4+F FIL-C9-N	31	G 1/4	29.5	8	9.5	13
54021-C2-N	SFP.30-3/8+F FIL-C2-N	31	G 3/8	29.5	10	9.5	13
54021-C9-N	SFP.30-3/8+F FIL-C9-N	31	G 3/8	29.5	10	9.5	13
54121-C2-N	SFP.30-1/2+F FIL-C2-N	31	G 1/2	29.5	12	9.5	14
54121-C9-N	SFP.30-1/2+F FIL-C9-N	31	G 1/2	29.5	12	9.5	14
56661-C2-N	SFP.40-3/8+F FIL-C2-N	42	G 3/8	36.5	10	11.5	28
56661-C9-N	SFP.40-3/8+F FIL-C9-N	42	G 3/8	36.5	10	11.5	28
56681-C2-N	SFP.40-1/2+F FIL-C2-N	42	G 1/2	36.5	12	11.5	29
56681-C9-N	SFP.40-1/2+F FIL-C9-N	42	G 1/2	36.5	12	11.5	29
54221-C2-N	SFP.40-3/4+F FIL-C2-N	42	G 3/4	36.5	18	11.5	30
54221-C9-N	SFP.40-3/4+F FIL-C9-N	42	G 3/4	36.5	18	11.5	30
54321-C2-N	SFP.40-1+F FIL-C2-N	42	G 1	36.5	18	11.5	32
54321-C9-N	SFP.40-1+F FIL-C9-N	42	G 1	36.5	18	11.5	32
56711-C2-N	SFP.57-3/4+F FIL-C2-N	57	G 3/4	42	18	14	51
56711-C9-N	SFP.57-3/4+F FIL-C9-N	57	G 3/4	42	18	14	51
56741-C2-N	SFP.57-1+F FIL-C2-N	57	G 1	42	23	14	52
56741-C9-N	SFP.57-1+F FIL-C9-N	57	G 1	42	23	14	52
54421-C2-N	SFP.57-1¼+F FIL-C2-N	57	G 1 1/4	44	28	16	55
54421-C9-N	SFP.57-1¼+F FIL-C9-N	57	G 1 1/4	44	28	16	55
54521-C2-N	SFP.57-1½+F FIL-C2-N	57	G 1 1/2	44	28	16	56
54521-C9-N	SFP.57-1½+F FIL-C9-N	57	G 1 1/2	44	28	16	56

Accessories for hydraulic systems

Conversion Table 1 mm = 0.039 inch	
D	
mm	inch
31	1.22
42	1.65
57	2.24
70	2.76

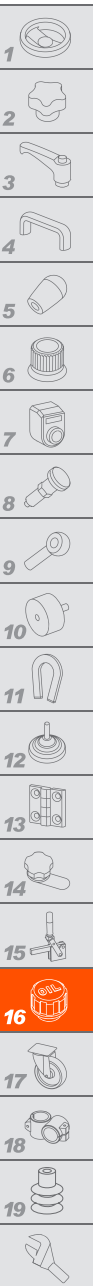


SFP+F-FOAM

METRIC

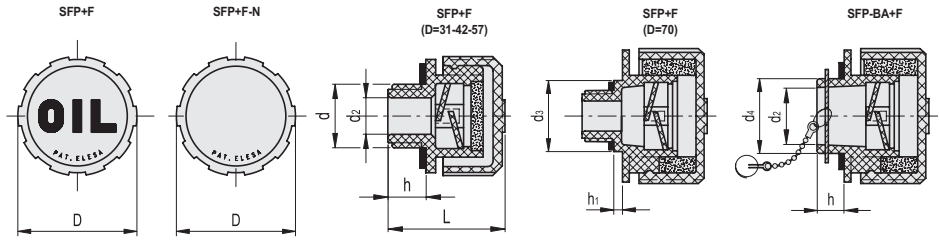
Code	Description	D	d	L	d2	d3	h	h1	⚖
54152	SFP.30-12x1.5+F FOAM	31	M12x1.5	29.5	6	-	9.5	-	10
54152-C9	SFP.30-12x1.5+F FOAM-C9	31	M12x1.5	29.5	6	-	9.5	-	10
54172	SFP.30-14x1.5+F FOAM	31	M14x1.5	29.5	8	-	9.5	-	10
54172-C9	SFP.30-14x1.5+F FOAM-C9	31	M14x1.5	29.5	8	-	9.5	-	10
53952	SFP.30-16x1.5+F FOAM	31	M16x1.5	29.5	10	-	9.5	-	11
53952-C9	SFP.30-16x1.5+F FOAM-C9	31	M16x1.5	29.5	10	-	9.5	-	11
53972	SFP.30-18x1.5+F FOAM	31	M18x1.5	29.5	10	-	9.5	-	12
53972-C9	SFP.30-18x1.5+F FOAM-C9	31	M18x1.5	29.5	10	-	9.5	-	12
53987	SFP.30-20x1.5+F FOAM	31	M20x1.5	29.5	12	-	9.5	-	12
53987-C9	SFP.30-20x1.5+F FOAM-C9	31	M20x1.5	29.5	12	-	9.5	-	12
53997	SFP.30-22x1.5+F FOAM	31	M22x1.5	29.5	12	-	9.5	-	13
53997-C9	SFP.30-22x1.5+F FOAM-C9	31	M22x1.5	29.5	12	-	9.5	-	13
53938	SFP.30-1/4+F FOAM	31	G 1/4	29.5	8	-	9.5	-	11
53938-C9	SFP.30-1/4+F FOAM-C9	31	G 1/4	29.5	8	-	9.5	-	11
54022	SFP.30-3/8+F FOAM	31	G 3/8	29.5	10	-	9.5	-	12
54022-C9	SFP.30-3/8+F FOAM-C9	31	G 3/8	29.5	10	-	9.5	-	12
54122	SFP.30-1/2+F FOAM	31	G 1/2	29.5	12	-	9.5	-	12
54122-C9	SFP.30-1/2+F FOAM-C9	31	G 1/2	29.5	12	-	9.5	-	12
56662	SFP.40-3/8+F FOAM#	42	G 3/8	36.5	10	-	11.5	-	22
56662-C9	SFP.40-3/8+F FOAM-C9#	42	G 3/8	36.5	10	-	11.5	-	22
56682	SFP.40-1/2+F FOAM#	42	G 1/2	36.5	12	-	11.5	-	24
56682-C9	SFP.40-1/2+F FOAM-C9#	42	G 1/2	36.5	12	-	11.5	-	24
54222	SFP.40-3/4+F FOAM#	42	G 3/4	36.5	18	-	11.5	-	24
54222-C9	SFP.40-3/4+F FOAM-C9#	42	G 3/4	36.5	18	-	11.5	-	24
54322	SFP.40-1+F FOAM	42	G 1	36.5	18	-	11.5	-	27
54322-C9	SFP.40-1+F FOAM-C9	42	G 1	36.5	18	-	11.5	-	27
56712	SFP.57-3/4+F FOAM#	57	G 3/4	42	18	-	14	-	43
56712-C9	SFP.57-3/4+F FOAM-C9#	57	G 3/4	42	18	-	14	-	43
56742	SFP.57-1+F FOAM	57	G 1	42	23	-	14	-	43
56742-C9	SFP.57-1+F FOAM-C9	57	G 1	42	23	-	14	-	43
54422	SFP.57-1 1/4+F FOAM	57	G 1 1/4	44	28	-	16	-	47
54422-C9	SFP.57-1 1/4+F FOAM-C9	57	G 1 1/4	44	28	-	16	-	47
54522	SFP.57-1 1/2+F FOAM	57	G 1 1/2	44	28	-	16	-	47
54522-C9	SFP.57-1 1/2+F FOAM-C9	57	G 1 1/2	44	28	-	16	-	47
54851	SFP.70-3/4+F FOAM#	70	G 3/4	63	16	35	15	6	80
54851-C9	SFP.70-3/4+F FOAM-C9#	70	G 3/4	63	16	35	15	6	80
54861	SFP.70-1 1/4+F FOAM	70	G 1 1/4	59	23	-	17	-	83
54861-C9	SFP.70-1 1/4+F FOAM-C9	70	G 1 1/4	59	23	-	17	-	83
54878	SFP.70-2+F FOAM	70	G 2	59	23	-	17	-	88
54878-C9	SFP.70-2+F FOAM-C9	70	G 2	59	23	-	17	-	88

# Types available on request with NPT thread (National Taper Pipe Thread - ANSI-ASME B1-20).



**Conversion Table**  
1 mm = 0.039 inch

D	
mm	inch
31	1.22
42	1.65
57	2.24
70	2.76



**METRIC**

**SFP+F-FOAM-N**

Code	Description	D	d	L	d2	d3	h	h1	⚖
54152-C2-N	SFP.30-12x1.5+F FOAM-C2-N	31	M12x1.5	29.5	6	-	9.5	-	10
54152-C9-N	SFP.30-12x1.5+F FOAM-C9-N	31	M12x1.5	29.5	6	-	9.5	-	10
54172-C2-N	SFP.30-14x1.5+F FOAM-C2-N	31	M14x1.5	29.5	8	-	9.5	-	10
54172-C9-N	SFP.30-14x1.5+F FOAM-C9-N	31	M14x1.5	29.5	8	-	9.5	-	10
53952-C2-N	SFP.30-16x1.5+F FOAM-C2-N	31	M16x1.5	29.5	10	-	9.5	-	11
53952-C9-N	SFP.30-16x1.5+F FOAM-C9-N	31	M16x1.5	29.5	10	-	9.5	-	11
53972-C2-N	SFP.30-18x1.5+F FOAM-C2-N	31	M18x1.5	29.5	10	-	9.5	-	12
53972-C9-N	SFP.30-18x1.5+F FOAM-C9-N	31	M18x1.5	29.5	10	-	9.5	-	12
53987-C2-N	SFP.30-20x1.5+F FOAM-C2-N	31	M20x1.5	29.5	12	-	9.5	-	12
53987-C9-N	SFP.30-20x1.5+F FOAM-C9-N	31	M20x1.5	29.5	12	-	9.5	-	12
53997-C2-N	SFP.30-22x1.5+F FOAM-C2-N	31	M22x1.5	29.5	12	-	9.5	-	13
53997-C9-N	SFP.30-22x1.5+F FOAM-C9-N	31	M22x1.5	29.5	12	-	9.5	-	13
53938-C2-N	SFP.30-1/4+F FOAM-C2-N	31	G 1/4	29.5	8	-	9.5	-	11
53938-C9-N	SFP.30-1/4+F FOAM-C9-N	31	G 1/4	29.5	8	-	9.5	-	11
54022-C2-N	SFP.30-3/8+F FOAM-C2-N	31	G 3/8	29.5	10	-	9.5	-	12
54022-C9-N	SFP.30-3/8+F FOAM-C9-N	31	G 3/8	29.5	10	-	9.5	-	12
54122-C2-N	SFP.30-1/2+F FOAM-C2-N	31	G 1/2	29.5	12	-	9.5	-	12
54122-C9-N	SFP.30-1/2+F FOAM-C9-N	31	G 1/2	29.5	12	-	9.5	-	12
56662-C2-N	SFP.40-3/8+F FOAM-C2-N#	42	G 3/8	36.5	10	-	11.5	-	22
56662-C9-N	SFP.40-3/8+F FOAM-C9-N#	42	G 3/8	36.5	10	-	11.5	-	22
56682-C2-N	SFP.40-1/2+F FOAM-C2-N#	42	G 1/2	36.5	12	-	11.5	-	24
56682-C9-N	SFP.40-1/2+F FOAM-C9-N#	42	G 1/2	36.5	12	-	11.5	-	24
54222-C2-N	SFP.40-3/4+F FOAM-C2-N#	42	G 3/4	36.5	18	-	11.5	-	24
54222-C9-N	SFP.40-3/4+F FOAM-C9-N#	42	G 3/4	36.5	18	-	11.5	-	24
54322-C2-N	SFP.40-1+F FOAM-C2-N	42	G 1	36.5	18	-	11.5	-	27
54322-C9-N	SFP.40-1+F FOAM-C9-N	42	G 1	36.5	18	-	11.5	-	27
56712-C2-N	SFP.57-3/4+F FOAM-C2-N#	57	G 3/4	42	18	-	14	-	43
56712-C9-N	SFP.57-3/4+F FOAM-C9-N#	57	G 3/4	42	18	-	14	-	43
56742-C2-N	SFP.57-1+F FOAM-C2-N	57	G 1	42	23	-	14	-	43
56742-C9-N	SFP.57-1+F FOAM-C9-N	57	G 1	42	23	-	14	-	43
54422-C2-N	SFP.57-1¼+F FOAM-C2-N	57	G 1 1/4	44	28	-	16	-	47
54422-C9-N	SFP.57-1¼+F FOAM-C9-N	57	G 1 1/4	44	28	-	16	-	47
54522-C2-N	SFP.57-1½+F FOAM-C2-N	57	G 1 1/2	44	28	-	16	-	47
54522-C9-N	SFP.57-1½+F FOAM-C9-N	57	G 1 1/2	44	28	-	16	-	47
54851-C2-N	SFP.70-3/4+F FOAM-C2-N#	70	G 3/4	63	16	35	15	6	80
54851-C9-N	SFP.70-3/4+F FOAM-C9-N#	70	G 3/4	63	16	35	15	6	80
54861-C2-N	SFP.70-1¼+F FOAM-C2-N	70	G 1 1/4	59	23	-	17	-	83
54861-C9-N	SFP.70-1¼+F FOAM-C9-N	70	G 1 1/4	59	23	-	17	-	83
54878-C2-N	SFP.70-2+F FOAM-C2-N	70	G 2	59	23	-	17	-	88
54878-C9-N	SFP.70-2+F FOAM-C9-N	70	G 2	59	23	-	17	-	88

# Types available on request with NPT thread (National Taper Pipe Thread - ANSI-ASME B1-20).

**METRIC**

**SFP-BA+F**

Code	Description	D	L	d2	d4	h	a	⚖
54881	SFP.70-BA+F FOAM	70	56	30	39	14	113	113
54881-C9	SFP.70-BA+F FOAM-C9	70	56	30	39	14	100	100

**METRIC**

**SFP-BA+F-N**

Code	Description	D	L	d2	d4	h	⚖
54881-C2-N	SFP.70-BA+F FOAM-C2-N	70	56	30	39	14	93
54881-C9-N	SFP.70-BA+F FOAM-C9-N	70	56	30	39	14	93