

- 1
- 2
- 3
- 4
- 5
- 6
- 7
- 8
- 9
- 10
- 11
- 12
- 13
- 14
- 15
- 16
- 17
- 18

MATERIAL

Glass-fibre reinforced polyamide based (PA) technopolymer, black colour, matte finish.

STANDARD EXECUTIONS

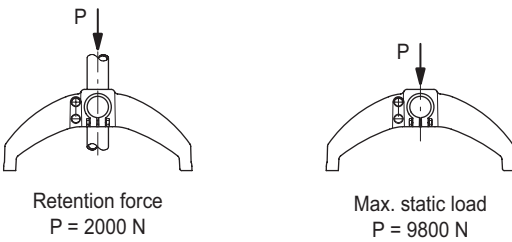
- **BAG2-120-A**: zinc-plated steel M10 screws, nuts and washers.
- **BAG2-120-SST**: AISI 304 stainless steel M10 screws, nuts and washers.

ASSEMBLY ON LEVELLING ELEMENTS

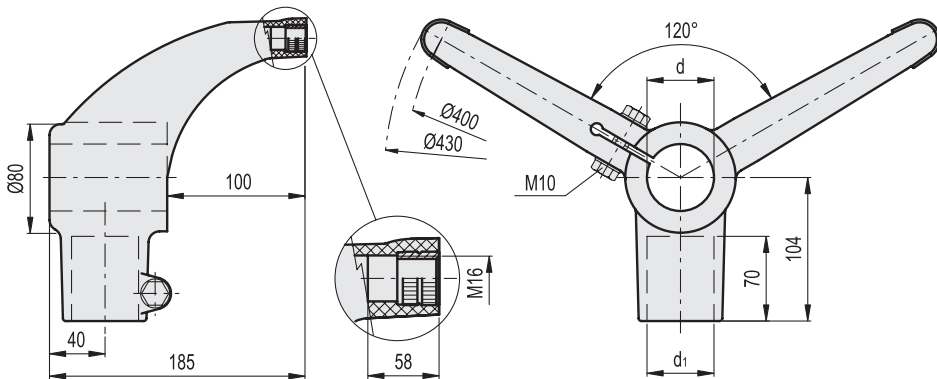
The bipod support bases are supplied with brass bosses, threaded pass-through hole for the assembly of the stem of the levelling element series LS.A (see page 798), LV.A (see page 804), LV.F (see page 818).

FEATURES

The rounded shapes with a modern and elegant aesthetic guarantee maximum cleanability in the event of liquids or dust falling from above. Maximum tightening torque for screw assembly 35 Nm.



Values obtained with tightening torque 35 Nm



Conversion Table	
1 mm = 0.039 inch	
d	
mm	inch
42.4	1.67
48.3	1.90
60.3	2.37

BAG2-120

Code	Description	d Tube (mm)	d Tube (GAS)	d1 Tube (mm)	d1 Tube (GAS)	⚖
419620	BAG2-120-42-42-A	42.4	1"1/4	42.4	1"1/4	740
419618	BAG2-120-48-42-A	48.3	1"1/2	42.4	1"1/4	730
419616	BAG2-120-48-48-A	48.3	1"1/2	48.3	1"1/2	720
419614	BAG2-120-60-42-A	60.3	2"	42.4	1"1/4	710
419612	BAG2-120-60-48-A	60.3	2"	48.3	1"1/2	700

BAG2-120-SST

Code	Description	⚖
419621	BAG2-120-42-42-SST	740
419619	BAG2-120-48-42-SST	730
419617	BAG2-120-48-48-SST	720
419615	BAG2-120-60-42-SST	710
419613	BAG2-120-60-48-SST	700