

- 1
- 2
- 3
- 4
- 5
- 6
- 7
- 8
- 9
- 10
- 11
- 12
- 13
- 14
- 15
- 16
- 17
- 18
- 19

COVERING

Mould-on polyurethane, hardness 92 Shore A.

LEVER BODY

Steel.

ROLLING ACTION

Hub with ball bearings. Ideal solution for heavy loads and continuous moving.

APPLICATIONS

Excellent rolling resistance and elasticity features, high wear and tearing resistance. For selection parameters see Technical data (on page 1295).

ENVIRONMENTAL CONDITIONS

Suitable for use in environments with the presence of atmospheric agents, alcohols and glycols, use in environments with the presence of organic and mineral acids, basic solutions and saturated vapour is not recommended.

ROLLING RESISTANCE - FORCE / LOAD APPLIED

For each load and diameter, the table indicates the force (in N) needed to push or pull a single wheel at a constant speed of 4 km/h on smooth ground.

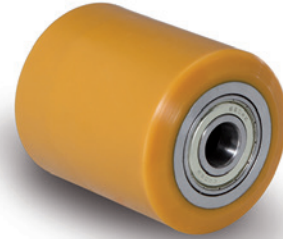
For manual handling of a 4-wheel trolley, it is recommended to choose diameters with values below 50 N; for frequent handling, choose values below 30 N.

MECHANICAL MOVING WITH TOWING DEVICES

For mechanical towing, please see the technical specifications to determine the capacity variation.

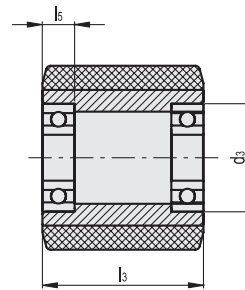
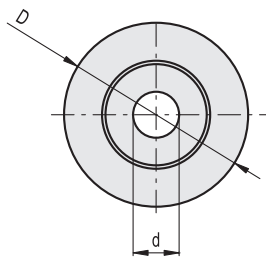
TEMPERATURE

If operating temperatures in an application differ from the standard range of values, please see the technical specifications to determine the capacity variation.



Traction force or thrust for wheel movement [N]

D [mm]		Load [N]						
		1000	2000	3000	4000	5000	6000	8000
D [mm]	80x70	10	24	37	51	76	-	-
	80x90	<10	22	31	45	61	78	-
	82x70	10	24	36	50	75	-	-
	82x90	<10	21	30	43	60	76	-
	82x100	<10	20	27	40	56	75	135
	85x40	10	34	60	-	-	-	-
	85x70	<10	23	35	48	72	-	-
	85x90	<10	21	31	47	64	77	-
	85x100	<10	19	26	38	56	72	120



METRIC

Conversion Table
1 mm = 0,039 inch

D	
mm	inch
80	3.12
82	3.20
85	3.31

Code	Description	D	d	d3	l3	l5	Static load# [N]	Rolling resistance# [N]	Dynamic carrying capacity# [N]	
452791	RE.G5-80x70-RSL	80	20	47	70	14	7000	2500	5600	1060
452792	RE.G5-80x90-RSL	80	20	47	90	14	9000	3350	7000	1350
452797	RE.G5-82x70-RSL	82	20	47	70	14	7000	2550	5600	1090
452798	RE.G5-82x90-RSL	82	20	47	90	14	9000	3400	7000	1330
452799	RE.G5-82x100-RSL	82	20	47	100	14	10000	3900	8000	1450
452793	RE.G5-85x40-RSL	85	20	47	40	14	4000	1500	3500	720
452794	RE.G5-85x70-RSL	85	20	47	70	14	7000	2650	5600	1120
452795	RE.G5-85x90-RSL	85	20	47	90	14	9000	3500	7000	1390
452796	RE.G5-85x100-RSL	85	20	47	100	14	10000	4000	8000	1520

Castors and wheels

For static load, rolling resistance and dynamic carrying capacity see Technical data (on page 1296).