

- 1
- 2
- 3
- 4
- 5
- 6
- 7
- 8
- 9
- 10
- 11
- 12
- 13
- 14
- 15
- 16
- 17
- 18
- 19

MATERIAL

Glass-fibre reinforced polyamide based (PA) technopolymer.

STANDARD EXECUTIONS

- **EKK-B:** brass boss, threaded blind hole. Ergostyle colours, matte finish.
- **EKK-p:** zinc-plated steel threaded stud, chamfered flat end UNI 947 : ISO 4753 (see Technical data on page A-11). Gray-black, orange or red color, matte finish.

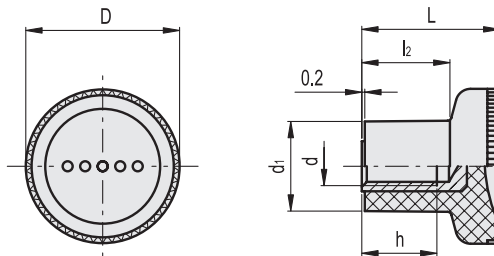
SPECIAL EXECUTIONS ON REQUEST

The knurled knobs EKK-p can be provided in one of the other Ergostyle colours.



ERGOSTYLE® ELESA Original design

EKK-B



Conversion Table	
1 mm = 0.039 inch	
D	
mm	inch
16	0.62
18	0.70
21	0.82
25	0.98
31	1.21
35	1.37

*Complete with colour index, example: 242081-C2 EKK.16 B-M3-C2

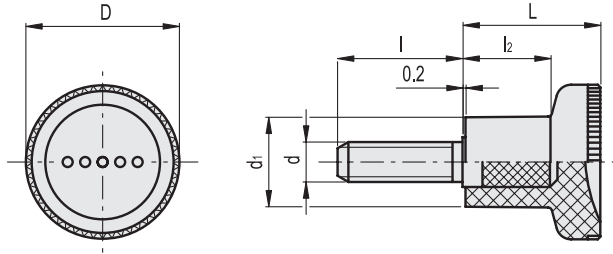
- C1 RAL7021
- C2 RAL2004
- C3 RAL7035
- C4 RAL1021
- C5 RAL5024
- C6 RAL3000
- C17 RAL6017

EKK-B

Code	Description	D	L	d1	d6H	h	l2	⚖
242081-*	EKK.16 B-M3-*	16	13	8.5	M3	6	8.5	3
242086-*	EKK.16 B-M4-*	16	13	8.5	M4	6	8.5	3
242091-*	EKK.18 B-M4-*	18	15.5	10.5	M4	6	10.5	5
242096-*	EKK.18 B-M5-*	18	15.5	10.5	M5	6	10.5	5
242111-*	EKK.21 B-M4-*	21	18	12.5	M4	10	10.5	8
242121-*	EKK.21 B-M5-*	21	18	12.5	M5	10	10.5	7
242126-*	EKK.21 B-M6-*	21	18	12.5	M6	10	10.5	7
242211-*	EKK.25 B-M6-*	25	22.5	14.5	M6	12	14	11
242221-*	EKK.25 B-M8-*	25	22.5	14.5	M8	12	14	16
242301-*	EKK.31 B-M6-*	31	27	18.5	M6	15	17	20
242311-*	EKK.31 B-M8-*	31	27	18.5	M8	15	17	22
242321-*	EKK.31 B-M10-*	31	27	18.5	M10	17	17	22
242401-*	EKK.35 B-M6-*	35	27.5	20	M6	16	17	25
242411-*	EKK.35 B-M8-*	35	27.5	20	M8	15	17	25
242421-*	EKK.35 B-M10-*	35	27.5	20	M10	17	17	25

Fixed & Revolving handles

EKK-p



Conversion Table 1 mm = 0.039 inch	
D	
mm	inch
16	0.62
18	0.70
21	0.82
25	0.98
31	1.21
35	1.37

*Complete with colour index, example: 243001-C2 EKK.16-p M3x10-C2

C1	C2	C6
RAL7021	RAL2004	RAL3000

METRIC

EKK-p

Code	Description	D	L	d1	d6g	l	l2	⚖️
243001-*	EKK.16-p M3x10-*	16	13	8.5	M3	10	8.5	4
243006-*	EKK.16-p M3x16-*	16	13	8.5	M3	16	8.5	4
243008-*	EKK.16-p-M4x10-*	16	13	8.5	M4	10	8.5	4
243009-*	EKK.16-p-M4x16-*	16	13	8.5	M4	16	8.5	4
243111-*	EKK.18-p M4x10-*	18	15.5	10.5	M4	10	10.5	5
243116-*	EKK.18-p M4x16-*	18	15.5	10.5	M4	16	10.5	9
243117-*	EKK.18-p-M5x10-*	18	15.5	10.5	M5	10	10.5	5
243118-*	EKK.18-p-M5x16-*	18	15.5	10.5	M5	16	10.5	9
243119-*	EKK.18-p-M5x20-*	18	15.5	10.5	M5	20	10.5	9
243121-*	EKK.21 p-M5x10-*	21	18	12.5	M5	10	10.5	8
243126-*	EKK.21 p-M5x16-*	21	18	12.5	M5	16	10.5	8
243131-*	EKK.21 p-M5x20-*	21	18	12.5	M5	20	10.5	9
243146-*	EKK.21 p-M6x16-*	21	18	12.5	M6	16	10.5	10
243151-*	EKK.21 p-M6x20-*	21	18	12.5	M6	20	10.5	11
243161-*	EKK.21 p-M6x30-*	21	18	12.5	M6	30	10.5	13
243226-*	EKK.25 p-M6x16-*	25	22.5	14.5	M6	16	14	14
243231-*	EKK.25 p-M6x20-*	25	22.5	14.5	M6	20	14	15
243236-*	EKK.25 p-M6x25-*	25	22.5	14.5	M6	25	14	16
243241-*	EKK.25 p-M6x30-*	25	22.5	14.5	M6	30	14	17
243251-*	EKK.25-p M8x20-*	25	22.5	14.5	M8	20	14	20
243256-*	EKK.25-p M8x25-*	25	22.5	14.5	M8	25	14	17
243261-*	EKK.25-p M8x30-*	25	22.5	14.5	M8	30	14	17
243271-*	EKK.25-p M8x40-*	25	22.5	14.5	M8	40	14	17
243351-*	EKK.31 p-M6x16-*	31	27	18.5	M6	16	17	25
243352-*	EKK.31 p-M6x20-*	31	27	18.5	M6	20	17	27
243353-*	EKK.31 p-M6x25-*	31	27	18.5	M6	25	17	28
243354-*	EKK.31 p-M6x30-*	31	27	18.5	M6	30	17	30
243326-*	EKK.31 p-M8x20-*	31	27	18.5	M8	20	17	26
243331-*	EKK.31 p-M8x25-*	31	27	18.5	M8	25	17	28
243336-*	EKK.31 p-M8x30-*	31	27	18.5	M8	30	17	29
243346-*	EKK.31 p-M8x40-*	31	27	18.5	M8	40	17	34
243361-*	EKK.31 p-M10x30-*	31	27	18.5	M10	30	17	38
243371-*	EKK.31 p-M10x40-*	31	27	18.5	M10	40	17	43
243411-*	EKK.35 p-M6x16-*	35	27.5	20	M6	16	17	24
243413-*	EKK.35 p-M6x20-*	35	27.5	20	M6	20	17	26
243415-*	EKK.35 p-M6x25-*	35	27.5	20	M6	25	17	26
243417-*	EKK.35 p-M6x30-*	35	27.5	20	M6	30	17	29
243421-*	EKK.35 p-M8x20-*	35	27.5	20	M8	20	17	29
243423-*	EKK.35 p-M8x25-*	35	27.5	20	M8	25	17	29
243425-*	EKK.35 p-M8x30-*	35	27.5	20	M8	30	17	30
243427-*	EKK.35 p-M8x40-*	35	27.5	20	M8	40	17	35
243431-*	EKK.35 p-M10x20-*	35	27.5	20	M10	20	17	35
243437-*	EKK.35 p-M10x40-*	35	27.5	20	M10	40	17	40



Fixed & Revolving handles