

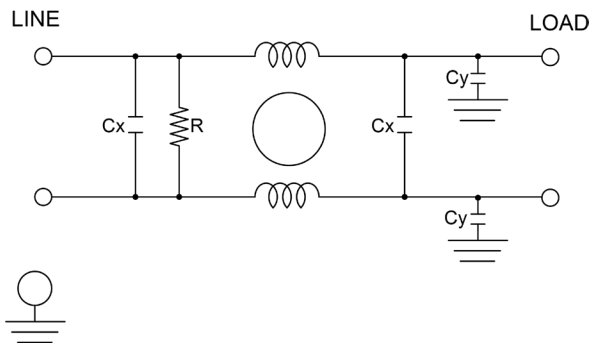
RP605

HIGH CURRENT DC POWER LINE FILTERS

FEATURES

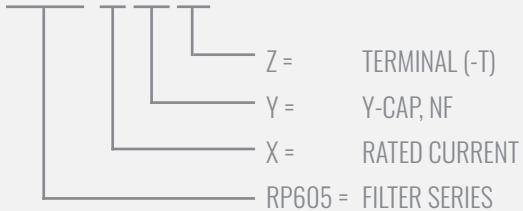
- » Rated currents include **100A, 150A, 180A, and 200A**
- » Dual Stage Line Filter
- » Available with **W** (wires), **S** (studs) and **C** (connectors) option
- » High Current Design
- » Agency Approved to UL1283 / 60929, CSA C22.2, EN 60939
- » Y-cap value can be adjusted to fit specification

ELECTRICAL SCHEMATIC



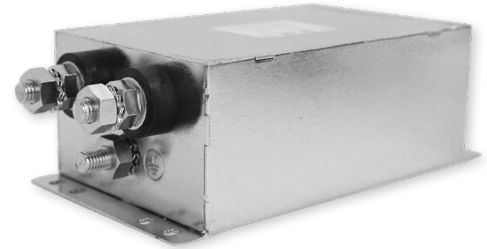
HOW TO ORDER

RP605-X-Y-Z



NOTE: USE ANY COMBINATION OF -X (AMPS) WITH ANY -Y RATINGS
E.G. **RP605-100-10-S**(100AMPS WITH 10 NF YCAP)

For **X**, **Y**, and **Z** options see product specification table.



SPECIFICATIONS

MAX. OPERATING VOLTAGE	250V +10%
AMBIENT TEMPERATURE	-25 TO 40°C
CLIMATIC CATEGORY	25/100/21
TERMINALS (-T)	WIRE LEADS
	STUDS 100A (M6),
	150-200A (M10)
	CONNECTORS
TYP. WEIGHT, LBS (KG)	6.0 (2.7)

HIPOT RATINGS

LINE TO GROUND	2700 VDC
-----------------------	----------

TYPICAL APPLICATIONS

- ✓ High power rectifiers
- ✓ Uninterrupted power supplies
- ✓ Inverters
- ✓ VFD
- ✓ PWM

RP605

HIGH CURRENT DC POWER LINE FILTERS

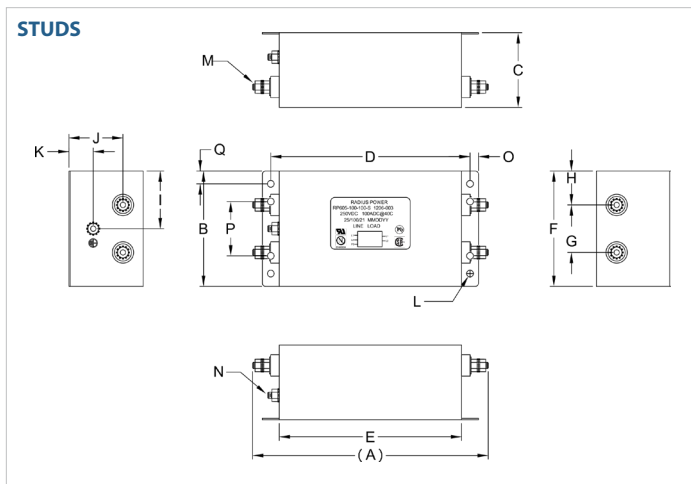
MODEL NO.	RATED CURRENT, A @ 40° C	Y-CAP, nF	TERMINAL OPTIONS			MAX. DIMENSIONS" (MM)		
			(W) INPUT/OUTPUT	(S) INPUT/OUTPUT	(C) INPUT/OUTPUT	WIDTH	(LENGTH)	HEIGHT
RP605-100-10-C	100	10			✓	*	*	*
RP605-100-10-S	100	10		✓		4.25"(108)	8.72"(221)	2.75"(70)
RP605-100-10-W	100	10	✓			*	*	*
RP605-100-100-C	100	100			✓	*	*	*
RP605-100-100-S	100	100		✓		4.25"(108)	8.72"(221)	2.75"(70)
RP605-100-100-W	100	100	✓			*	*	*
RP605-150-10-C	150	10			✓	*	*	*
RP605-150-10-S	150	10		✓		4.25"(108)	8.72"(221)	2.75"(70)
RP605-150-10-W	150	10	✓			*	*	*
RP605-150-100-C	150	100			✓	*	*	*
RP605-150-100-S	150	100		✓		4.25"(108)	8.72"(221)	2.75"(70)
RP605-150-100-W	150	100	✓			*	*	*
RP605-180-10-C	180	10			✓	*	*	*
RP605-180-10-S	180	10		✓		4.25"(108)	8.72"(221)	2.75"(70)
RP605-180-10-W	180	10	✓			*	*	*
RP605-180-100-C	180	100			✓	*	*	*
RP605-180-100-S	180	100		✓		4.25"(108)	8.72"(221)	2.75"(70)
RP605-180-100-W	180	100	✓			*	*	*
RP605-200-10-C	200	10			✓	*	*	*
RP605-200-10-S	200	10		✓		4.25"(108)	8.72"(221)	2.75"(70)
RP605-200-10-W	200	10	✓			*	*	*
RP605-200-100-C	200	100			✓	*	*	*
RP605-200-100-S	200	100		✓		4.25"(108)	8.72"(221)	2.75"(70)
RP605-200-100-W	200	100	✓			*	*	*

*Contact factory for dimensions.

RP605

HIGH CURRENT DC POWER LINE FILTERS

RP605 MECHANICAL OUTLINES (MM)



SERIES	(A)	B	C	D	E	F	G	H	I	J	K	L	M	N	O	P	Q
STUDS 100A (M6)	9.10" (231)	4.25" (108)	2.75" (70)	7.37" (187)	6.75" (171)	4.25" (108)	1.75" (45)	1.25" (32)	2.13" (54)	2.00" (51)	0.90" (23)	Ø0.30x0.18 (Ø7.6x4.6)	STUD M6 4x	STUD, GND, M6	0.31" (8)	2.00" (51)	0.47" (12)
STUDS 150-200A (M10)	9.72" (247)	4.25" (108)	2.75" (70)	7.37" (187)	6.75" (171)	4.25" (108)	1.75" (45)	1.25" (32)	2.13" (54)	2.00" (51)	0.90" (23)	Ø0.30x0.18 (Ø7.6x4.6)	STUD M10 4x	STUD, GND, M10	0.31" (8)	2.00" (51)	0.47" (12)

TYPICAL TOLERANCE: +/-0.02" (0.50MM)

TYPICAL INSERTION LOSS, dB (50/50 Ohm)

Amps	Freq (MHz)	Insertion Loss (dB)				
		0.15	0.5	1.0	10	30
100	CM (dB)	16	28	36	45	50
	DM (dB)	32	60	60	50	50
150	CM (dB)	16	28	36	45	50
	DM (dB)	32	60	60	50	50
180	CM (dB)	16	28	36	45	50
	DM (dB)	32	60	60	50	50
200	CM (dB)	16	28	36	45	50
	DM (dB)	32	60	60	50	50