

RPC1299

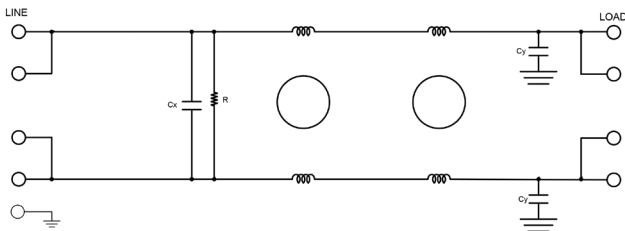
PCB MOUNT DUAL STAGE DC FILTER

FEATURES

- » Rated currents include **30A**
- » Dual Stage Line Filter
- » **P** (pins) option
- » Agency Approved to UL1283 / 60929 and EN 60939
- » Y-cap value can be adjusted to fit specification



ELECTRICAL SCHEMATIC



SPECIFICATIONS

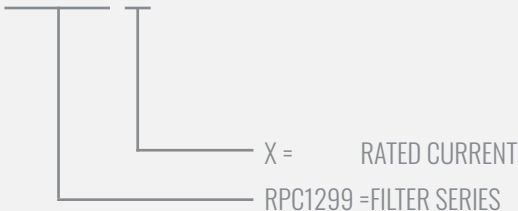
MAX. OPERATING VOLTAGE	75 VDC +10%
AMBIENT TEMPERATURE	-25 TO 100°C
CLIMATIC CATEGORY	40/100/21
TERMINALS (-T)	PINS
TYP. WEIGHT, LBS (KG)	0.2 (0.09)

HIPOT RATINGS

LINE TO GROUND	2700 VDC
-----------------------	----------

HOW TO ORDER

RPC1299- X



NOTE: USE ANY COMBINATION OF -X (AMPS) WITH ANY -Y RATINGS

E.G. **RPC1299-30** (30AMPS)

For **X** options see product specification table.

TYPICAL APPLICATIONS

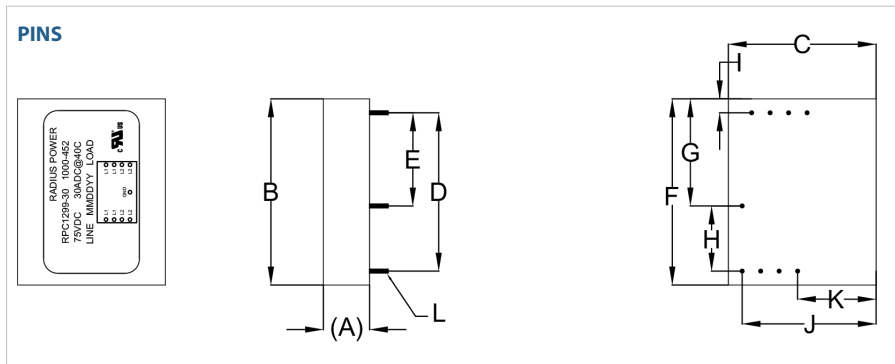
- ✓ Telecom
- ✓ Military
- ✓ Aerospace
- ✓ DC-DC Converters
- ✓ High Current Board Mount Applications

RPC1299

PCB MOUNT DUAL STAGE DC FILTER

MODEL NO.	RATED CURRENT, A @ 40° C	TERMINAL OPTIONS	MOUNTING	MAX. DIMENSIONS" (MM)		
		(PINS) INPUT/OUTPUT	PBC	WIDTH	(LENGTH)	HEIGHT
RPC1299-30	30	✓	✓	2.00"(51)	0.50"(13)	1.60"(41)

RPC1299 MECHANICAL OUTLINES (MM)



SERIES	(A)	B	C	D	E	F	G	H	I	J	K	L
PINS	0.50" (13)	2.00" (51)	1.60" (41)	1.70" (43)	1.00" (25)	2.00" (51)	1.15" (29)	0.70" (18)	0.15" (4)	1.45" (37)	0.85" (22)	Ø0.04" (Ø1.02 TYP)

TYPICAL TOLERANCE: +/-0.02" (0.50MM)

TYPICAL INSERTION LOSS, dB (50/50 Ohm)

Amps	Freq (MHz)	0.15	0.5	1.0	10	30
30	CM (dB)	12	30	42	55	45
	DM (dB)	10	32	44	50	60