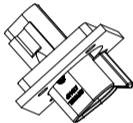


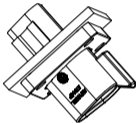


REVISIONS					
REV	ECO	DESCRIPTION	DATE	BY	APPR
A1	--	RELEASE NUMBER	30/NOV/18	ROOKE	TOMMY
A2	--	ADDED DATE CODE FEATURE	07/JAN/2025	JHEAD	TZ

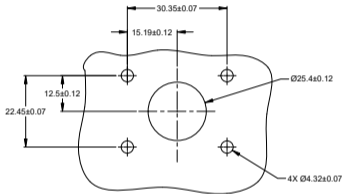
FOR REFERENCE ONLY



FRONT MOUNT



REAR MOUNT



RECOMMENDED CUTOUT  
FRONT AND REAR MOUNT

SEE SHEET 1		DESCRIPTION		ITEM
QUANTITY	PART NUMBER	MATERIALS LIST		
UNLESS OTHERWISE SPECIFIED: 1) All dimensions are in millimeters. 2) Tolerances are as follows: 1 PL DEC ±0.30 Precision ±1.58 2 PL DEC ±0.15 Angles ±1° 3 PL DEC ±0.08 3) Note reference to		DESIGNER: ROOKE DATE: 30/NOV/18 CHECKER: ORON DATE: 30/NOV/18 APPROVAL: TOMMY DATE: 30/NOV/18	<b>Amphenol</b> Sine Systems - www.amphenol-sine.com 44724 Mosley Drive Clinton Township, MI 48035 3P RECEPTACLE, FLANGE MOUNT, RD	
MATERIAL SPECIFICATIONS: CUSTOMER:		THIS DRAWING IS SUPPLIED FOR INFORMATION ONLY. DESIGN FEATURES, SPECIFICATIONS AND PERFORMANCE DATA INDICATED HEREON ARE THE PROPERTY OF THE AMPHENOL CORPORATION. NO PARTS OR SUBASSEMBLIES ARE TO BE MANUFACTURED OR SUPPLIED. ALL DIMENSIONS ARE SUBJECT TO NORMAL MANUFACTURING VARIATIONS.		
PROCESS SPECIFICATIONS:		REV: <b>B</b> SCALE: NONE	P/W: <b>C-</b> PART NUMBER: <b>AT04-3P-CLXX</b>	DESIG: <b>A2</b> SHEET 2 OF 2
NEXT ASSY:		SCALE: NONE		

TITLE: 3P RECEPTACLE FLANGE MOUNT RD  
DRAWING: AT04-3P-CLXX  
REV: A2  
SHEET 2 OF 2