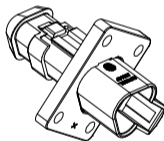
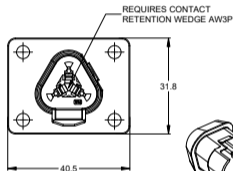
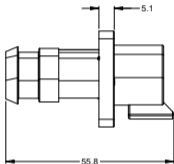
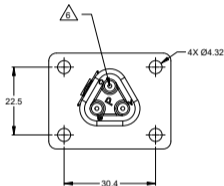
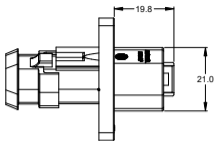


REVISIONS					
REV	ECO	DESCRIPTION	DATE	BY	APPR
A1	-	RELEASE NUMBER	30/NOV/18	ROOKE	TOMMY
A2	-	ADDED DATE CODE FEATURE	07/JAN/2025	JHEAD	TZ



NOTES: UNLESS OTHERWISE SPECIFIED

- MATERIAL:
HOUSING: THERMOPLASTIC
SEAL: SILICONE RUBBER
- MODIFICATIONS: FLANGE, END CAP
- SPECIFICATIONS:
3.1 CURRENT RATING: 13 AMPS
3.2 OPERATING TEMPERATURE: -55°C TO +125°C
3.3 DIELECTRIC WITHSTANDING VOLTAGE: LESS THAN 2 MILLIAMPS CURRENT LEAKAGE @ 1500 VOLTS AC
3.4 INSULATION RESISTANCE: 1000 MEGOHMS MIN @ 25°C
3.5 MOISTURE RESISTANCE: IP67 (MATED CONDITION)
3.6 MATING CYCLE DURABILITY: 100 CYCLES
3.7 RoHS COMPLIANT

4. MATING PART: AT06-3S* PLUG.
(* = MODIFICATIONS AND COLORS)

5. ALL DIMENSIONS ARE FOR REFERENCE USE ONLY.

P/N CHART	
COLOR	P/N
GREY	AT04-3P-LE08
BLACK	AT04-3P-LE12

△ CONTACT SIZE AND REAR SEAL WIRE RANGE:

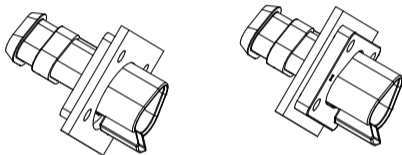
CONTACT SIZE	MIN. INSUL O.D.	MAX. INSUL O.D.	TYPICAL WIRE RANGE
16	2.24 mm (.088 in)	3.68 mm (.145 in)	14 - 20 AWG

QUANTITY	SEE P/N CHART PART NUMBER	DESCRIPTION	ITEM

MATERIALS LIST			
UNLESS OTHERWISE SPECIFIED: 1) All dimensions are in millimeters. 2) Tolerances are as follows: 1 PL DEC .05-30 Finishes as 1/8" Angles ±1° 2 PL DEC .05-10 3 PL DEC .05-08 3) Note reference to △	DESIGNER: ROOKE CHECKED: OREN DATE: 30/NOV/18	30 DAY PART USE ONLY	DATE: 30/NOV/18
MATERIAL SPECIFICATIONS:	APPROVAL: TOMMY DATE: 30/NOV/18	Amphenol Sine Systems - www.amphenol-sine.com 44724 Morley Drive Clinton Township, MI 48036	
PROCESS SPECIFICATIONS:	SEE DRAWING & SUPPLIER FOR INFORMATION ONLY. DESIGN FEATURES, SPECIFICATIONS AND PERFORMANCE DATA INDICATED HEREIN ARE THE PROPERTY OF THE AMPHENOL CORPORATION. NO RIGHTS OR REPRESENTATIONS ARE IMPLIED. ALL DIMENSIONS ARE SUBJECT TO NORMAL MANUFACTURING VARIATIONS.	SCALE: NONE	REV: A2
TEST AXES:		SCALE: NONE	REV: A2

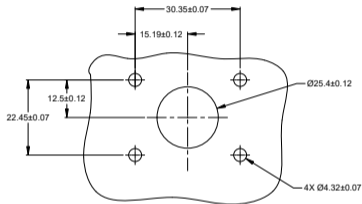
REVISIONS					
REV	ECO	DESCRIPTION	DATE	BY	APPR
A1	--	RELEASE NUMBER	30/NOV/18	ROOKE	TOMMY
A2	--	ADDED DATE CODE FEATURE	07/JAN/2025	JHEAD	TZ

FOR REFERENCE ONLY



FRONT MOUNT

REAR MOUNT



RECOMMENDED CUTOUT
FRONT AND REAR MOUNT

SEE SHEET 1		DESCRIPTION		ITEM
PART NUMBER				
QUANTITY		MATERIALS LIST		
<small>UNLESS OTHERWISE SPECIFIED: 1) All dimensions are in millimeters. 2) Tolerances are as follows: 3 Pk. DEC ±0.30 1) Precision ±.004 2 Pk. DEC ±0.38 1) Angles ±1° 3) Hole reference </small>		SIGNATURES: ROOKE CHECKED: ORON APPROVAL: TOMMY	DATE: 30/NOV/18 30/NOV/18 30/NOV/18	Amphenol Sine Systems - www.amphenol-sine.com 44724 Morley Drive Clinton Township, MI 48036
MATERIAL SPECIFICATIONS		3P RECEPTACLE, FLANGE MOUNT, END CAP		
PROCESS SPECIFICATIONS		<small>THIS DRAWING IS SUPPLIED FOR INFORMATION ONLY. DESIGN FEATURES, SPECIFICATIONS AND PERFORMANCE DATA, IDENTIFIER/REQUIRE THE PROPERTY OF THE SUPPLIER. COMPANY HAS NO RIGHTS OF REPRODUCTION AND IMPRINT. ALL DIMENSIONS ARE SUBJECT TO NORMAL MANUFACTURING VARIATIONS.</small>		
NEXT ASSY:		SIZE: B C- SCALE: NONE	REV: AT04-3P-LEXX SHEET: 2 OF 2	ITEM: A2

TITLE: 3P RECEPTACLE, FLANGE MOUNT, END CAP
 DWG NO: AT04-3P-LEXX
 REV: A2
 SHEET: 2 OF 2