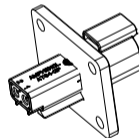
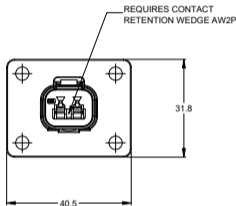
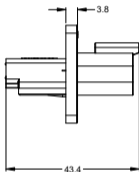
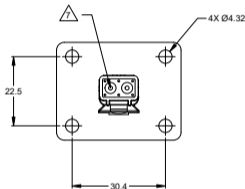
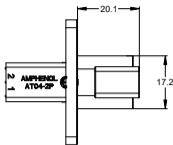


REVISIONS					
REV	ECO	DESCRIPTION	DATE	BY	APPR
A1	--	RELEASE NUMBER	30NOV18	ROOKE	TOMMY
A2	--	FIXED TYPO: 30.35 WAS 33.35 (SHT 2)	9/NOV/20	J-HEAD	DH
A3	--	ADDED DATE CODE FEATURE	10JAN2025	J-HEAD	TZ



NOTES: UNLESS OTHERWISE SPECIFIED

- COLOR: GRAY
- MATERIAL:  
HOUSING: THERMOPLASTIC  
SEAL: SILICONE RUBBER
- MODIFICATIONS: FLANGE
- SPECIFICATIONS:  
3.1 CURRENT RATING: 13 AMPS  
3.2 OPERATING TEMPERATURE: -55°C TO +125°C.  
3.3 DIELECTRIC WITHSTANDING VOLTAGE: LESS THAN 2 MILLIAMPS CURRENT LEAKAGE @ 1500 VOLTS AC.  
3.4 INSULATION RESISTANCE: 1000 MEGOHMS MIN @ 25°C.  
3.5 MOISTURE RESISTANCE: IP67 ( MATED CONDITION )  
3.6 MATING CYCLE DURABILITY: 100 CYCLES  
3.7 RoHS COMPLIANT
- MATING PART: AT06-2S\* PLUG.  
(\* = MODIFICATIONS AND COLORS )
- ALL DIMENSIONS ARE FOR REFERENCE USE ONLY.

CONTACT SIZE AND REAR SEAL WIRE RANGE:

CONTACT SIZE	MIN. INSUL O.D.	MAX. INSUL O.D.	TYPICAL WIRE RANGE
16	2.24 mm (.088 in)	3.68 mm (.145 in)	14 - 20 AWG

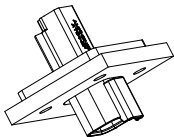
QUANTITY	PART NUMBER	DESCRIPTION	ITEM
	AT04-2P-L012		

MATERIALS LIST			
UNLESS OTHERWISE SPECIFIED	SIGNATURE(S)	DATE	
1) All dimensions are in centimeters 2) Tolerances are as follows: 3 PL DEC: ±0.30   Parallelism ±0.04 3 PL DEC: ±0.16 3 PL DEC: ±0.08 3) Note reference =	ROOKE	30NOV18	
	ORON	30NOV18	
	TOMMY	30NOV18	
MATERIAL SPECIFICATIONS:	<p><b>Amphenol</b> Sine Systems - www.amphenol-sine.com 44724 Morley Drive Clinton Township, MI 48036</p>		
PROCESS SPECIFICATIONS:	<p>2P RECEPTACLE, FLANGE MOUNT, GRAY</p>		
THIS DRAWING IS SUPPLIED FOR INFORMATION ONLY. DESIGN FEATURES, SPECIFICATIONS AND PERFORMANCE DATA BECOME HEREBY THE PROPERTY OF THE PURCHASER. CONFIDENTIALITY RIGHTS OR PATENT RIGHTS ARE RESERVED. ALL DIMENSIONS ARE SUBJECT TO NORMAL MANUFACTURING VARIATIONS.	SIZE: <b>B C-</b>	TYPE: <b>AT04-2P-L012</b>	REV: <b>A3</b>
REVISION:	REASON: <b>NONE</b>	SHEET: <b>1</b>	OF: <b>2</b>

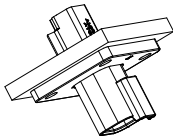
TITLE: 2P RECEPTACLE, FLANGE MOUNT, GRAY  
DRAWING: AT04-2P-L012  
REV: A3  
SHEET: 1 OF 2

REVISIONS					
REV	ECO	DESCRIPTION	DATE	BY	APPR
A1	--	RELEASE NUMBER	30NOV18	ROOKIE	TOMMY
A2	--	FIXED TYPO. 30.35 WAS 33.35 (SHT 2)	9NOV20	JHEAD	DH
A3	--	ADDED DATE CODE FEATURE	10JAN2025	JHEAD	TZ

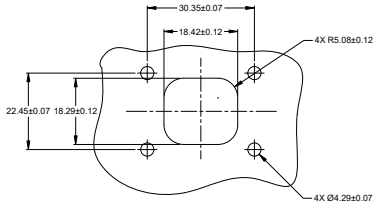
FOR REFERENCE ONLY



FORONT MOUNT



REAR MOUNT



RECOMMENDED CUTOUT  
FRONT AND REAR MOUNT

AT04-2P-L012		DESCRIPTION		ITEM
PART NUMBER				
QUANTITY	<b>MATERIALS LIST</b>			
UNLESS OTHERWISE SPECIFIED: 1) All dimensions are in millimeters. 2) Tolerances are as follows: 1. PL DEC: ±0.30 2. PL DEC: ±0.10 3. PL DEC: ±0.08 3) Note reference to <b>Δ</b>	RECOMM. FINISH: RODNE ORON WREDEK APPROVAL: TOMMY DATE: 30NOV18 30NOV18	DATE: 30NOV18	<b>Amphenol</b> Site Systems - www.amphenol-site.com 44724 Morley Drive Clinton Township, MI 48038 2P RECEPTACLE, FLANGE MOUNT, GRAY	
INTERNAL SPECIFICATIONS:	CUSTOMER:			
PROCESS SPECIFICATIONS:	THIS DRAWING IS SUPPLIED FOR INFORMATION ONLY. THESE FEATURES, SPECIFICATIONS AND PERFORMANCE DATA ARE THE PROPERTY OF THE AMPHENOL CORPORATION. NO RIGHTS OF REPRODUCTION ARE GRANTED. ALL DIMENSIONS ARE SUBJECT TO NORMAL MANUFACTURING VARIATIONS.			
NEXT ASBY:	SIZE: <b>B C-</b>	TYPE: NONE	QTY: <b>AT04-2P-L012</b>	REV: <b>A3</b>
	SHEET 2 OF 2			

TITLE: 2P RECEPTACLE FLANGE MOUNT GRAY DWG NO: AT04-2P-L012 REV: A3 SH: 2 OF 2