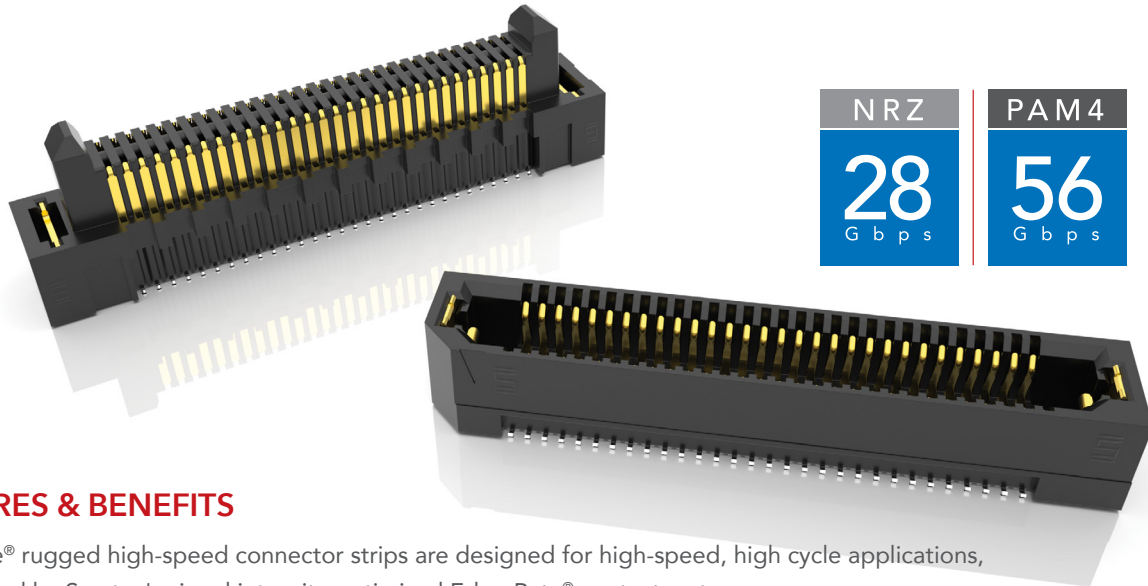


RUGGED HIGH-SPEED STRIPS

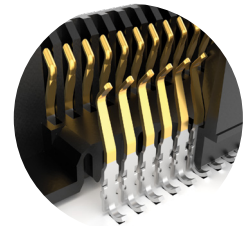


NRZ	PAM4
28 Gbps	56 Gbps

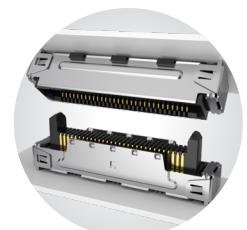
FEATURES & BENEFITS

Edge Rate® rugged high-speed connector strips are designed for high-speed, high cycle applications, and enabled by Samtec's signal integrity-optimized Edge Rate® contact system.

- Up to 1.5 mm contact wipe for a reliable connection
- 20 to 200 positions
- Choice of 0.50 mm, 0.635 mm or 0.80 mm pitch
- 0.50 mm pitch system offers up to 40% PCB space savings vs. 0.80 mm pitch
- 0.635 mm pitch system with extremely slim 2.5 mm body width
- Rugged latching, extended guide posts and 360° shielding
- Severe Environment Testing qualified (ERM8/ERF8); aligns with MIL-DTL-55302. Visit samtec.com/set



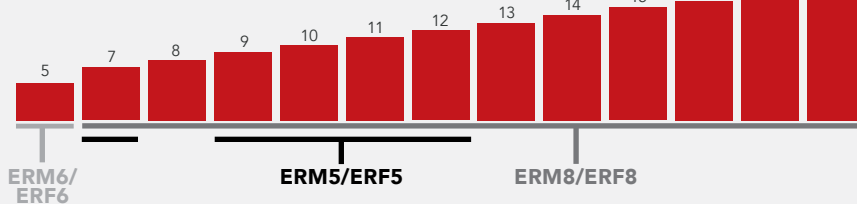
Signal integrity-optimized Edge Rate® contact system reduces broadside coupling



Rugged 360° shielding reduces EMI

EDGE RATE® STACK HEIGHT FLEXIBILITY

(shown in mm)



KEY SPECIFICATIONS

SERIES	PITCH	INSULATOR MATERIAL	TERMINAL MATERIAL	PLATING	OPERATING TEMP RANGE	CURRENT RATING	VOLTAGE RATING	LEAD-FREE SOLDERABLE
ERM5 / ERF5	0.50 mm	Black LCP	Phosphor Bronze or BeCu (ERM5), BeCu (ERF5)	Au or Sn over 50 μm* (1.27 μm) Ni	-55 °C to +125 °C	1.5 A	190 VAC/ 269 VDC	Yes
ERM6 / ERF6	0.635 mm		Copper Alloy			1.4 A	155 VAC/ 219 VDC	
ERM8 / ERF8	0.80 mm		Phosphor Bronze or BeCu (ERM8), BeCu (ERF8)			1.4 A	225 VAC/ 318 VDC	

(0.635 mm) .025" PITCH • RUGGED HIGH-SPEED HEADERS & SOCKETS

ERM6	POSITIONS PER ROW	01.5	PLATING OPTION	DV	A	OPTION	K	"X"R
-------------	--------------------------	-------------	-----------------------	-----------	----------	---------------	----------	-------------

**-10, -20, -30,
-40, -50, -60**
(Standard Sizes)

-L
= 10 μ" (0.25 μm)
Gold on contact,
Matte Tin on tail

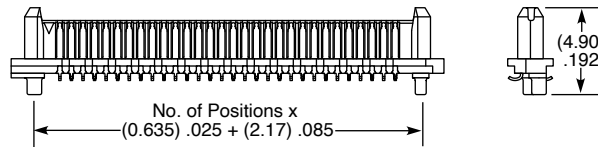
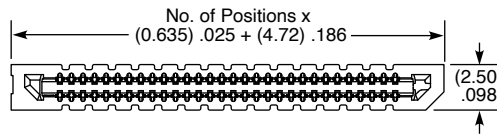
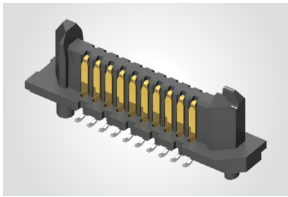
(Leave Blank for
No Weld Tab)

-WT
= Weld Tab

-TR
= Tape & Reel

-FR
= Full Reel Tape & Reel
(must order maximum quantity
per reel; contact Samtec for
quantity breaks)

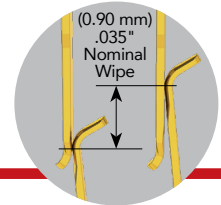
ERM6
Board Mates:
ERF6



MATED HEIGHT*

ERF6 LEAD STYLE	ERM6 LEAD STYLE
	-01.5
-03.5	(5.00) .197

*Processing conditions will affect mated height.



View complete specifications at: samtec.com?ERM6

ERF6	POSITIONS PER ROW	03.5	PLATING OPTION	DV	A	OPTION	K	"X"R
-------------	--------------------------	-------------	-----------------------	-----------	----------	---------------	----------	-------------

**-10, -20, -30,
-40, -50, -60**
(Standard Sizes)

-L
= 10 μ" (0.25 μm)
Gold on contact,
Matte Tin on tail

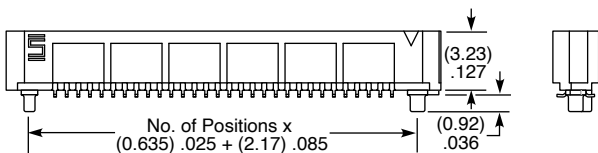
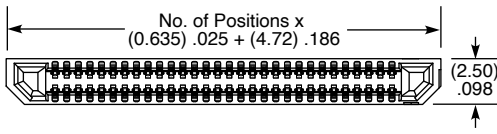
(Leave Blank for
No Weld Tab)

-WT
= Weld Tab

-TR
= Tape & Reel

-FR
= Full Reel Tape & Reel
(must order maximum quantity
per reel; contact Samtec for
quantity breaks)

ERF6
Board Mates:
ERM6



MATED HEIGHT*

ERF6 LEAD STYLE	ERM6 LEAD STYLE
	-01.5
-03.5	(5.00) .197

*Processing conditions will affect mated height.

Notes:
Kapton pad and tape & reel
packaging are standard.

Some lengths, styles and
options are non-standard,
non-returnable.

View complete specifications at: samtec.com?ERF6