

YHVA630-2PHM-4MM-A ✓ ACTIVE

HIVONEX | HVA 630

TE Internal #: YHVA630-2PHM-4MM-A

2 Position Housing, Receptacle, Cable-to-Cable / Wire-to-Wire, 9.4 mm [.37 in] Centerline, Sealable, Orange, Wire & Cable, Power & Signal, HVA 630

[View on TE.com >](#)



Connectors > Automotive Connectors > Automotive Housings



Number of Positions: 2

Connector & Housing Type: **Receptacle**

Mating Tab Width: 6.3 mm [.248 in]

Connector System: **Cable-to-Cable, Wire-to-Wire**

Centerline (Pitch): 9.4 mm [.37 in]

Features

Industry Standards

IP Rating	IP6K7, IP6K9K
-----------	---------------

Electrical Characteristics

Operating Voltage	850 VDC
-------------------	---------

Dimensions

Product Width	38.3 mm[1.51 in]
Product Length	37.6 mm[1.48 in]
Connector Height	71.3 mm[2.81 in]

Packaging Features

Packaging Method	Package
Packaging Quantity	1

Mechanical Attachment

Strain Relief	With
Terminal Position Assurance	No
Mating Alignment Type	Keyed
Mating Alignment	With
Connector Mounting Type	Cable Mount (Free-Hanging)

Other



Serviceable	No
Connector Position Assurance Capable	Yes
EU RoHS Compliance	Compliant
EU ELV Compliance	Compliant

Body Features

Cable Exit Angle	180°
Primary Product Color	Orange
Connector & Keying Code	A

Housing Features

Housing Material	PA 66 GF30
Centerline (Pitch)	9.4 mm [.37 in]

Contact Features

Contact Type	Tab
Mating Tab Width	6.3 mm [.248 in]

Product Type Features

Mixed & Hybrid Connector	Yes
Connector & Housing Type	Receptacle
Connector System	Cable-to-Cable, Wire-to-Wire
Sealable	Yes
Primary Locking Feature	Integrated in Housing
Connector & Contact Terminates To	Wire & Cable

Configuration Features

Number of Positions	2
Number of Rows	1

Usage Conditions

Operating Temperature (Max)	140 °C [284 °F]
Operating Temperature Range	-40 – 140 °C [-40 – 284 °F]

Operation/Application

Circuit Application	Power & Signal
---------------------	----------------

Product Compliance

[For compliance documentation, visit the product page on TE.com>](#)



EU RoHS Directive 2011/65/EU	Compliant
EU ELV Directive 2000/53/EC	Compliant
China RoHS 2 Directive MIIT Order No 32, 2016	No Restricted Materials Above Threshold
EU REACH Regulation (EC) No. 1907/2006	<p>Current ECHA Candidate List: JUNE 2024 (241)</p> <p>Candidate List Declared Against: JUNE 2023 (235)</p> <p>SVHC > Threshold:</p> <p>Octamethylcyclotetrasiloxane (D4) (.5% in Component part)</p> <p>Decamethylcyclopentasiloxane (D5) (.5% in Component part)</p> <p>Dodecamethylcyclohexasiloxane (D6) (.5% in Component part)</p> <p>Article Safe Usage Statements: Wash thoroughly after handling. Recycle if possible and dispose of the article by following all applicable governmental regulations relevant to your geographic location.</p>
Halogen Content	Low Bromine/Chlorine - Br and Cl < 900 ppm per homogenous material. Also BFR /CFR/PVC Free
Solder Process Capability	Not reviewed for solder process capability

Product Compliance Disclaimer

This information is provided based on reasonable inquiry of our suppliers and represents our current actual knowledge based on the information they provided. This information is subject to change. The part numbers that TE has identified as EU RoHS compliant have a maximum concentration of 0.1% by weight in homogenous materials for lead, hexavalent chromium, mercury, PBB, PBDE, DBP, BBP, DEHP, DIBP, and 0.01% for cadmium, or qualify for an exemption to these limits as defined in the Annexes of Directive 2011/65/EU (RoHS2). Finished electrical and electronic equipment products will be CE marked as required by Directive 2011/65/EU. Components may not be CE marked. Additionally, the part numbers that TE has identified as EU ELV compliant have a maximum concentration of 0.1% by weight in homogenous materials for lead, hexavalent chromium, and mercury, and 0.01% for cadmium, or qualify for an exemption to these limits as defined in the Annexes of Directive 2000/53/EC (ELV). Regarding the REACH Regulation, the information TE provides on SVHC in articles for this part number is based on the latest European Chemicals Agency (ECHA) 'Guidance on requirements for substances in articles' posted at this URL: <https://echa.europa.eu/guidance-documents/guidance-on-reach>

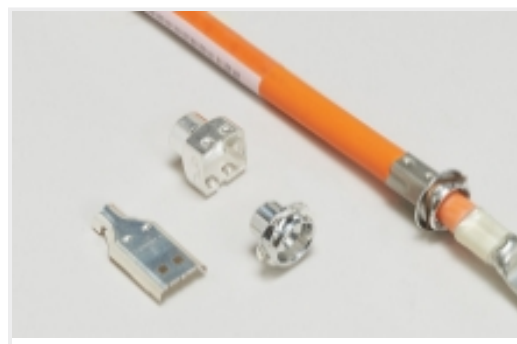
Compatible Parts



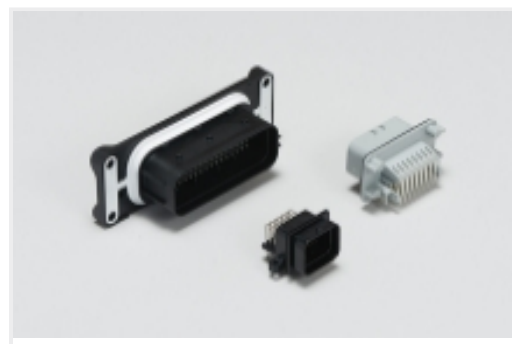
Also in the Series | HVA 630



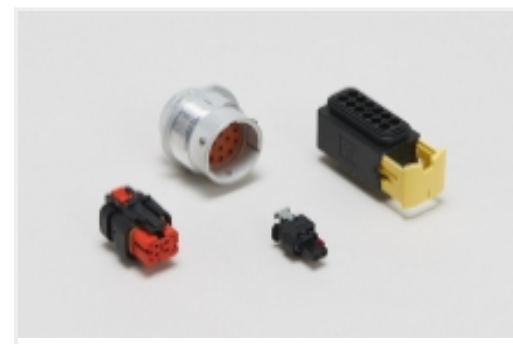
Automotive Connector Caps & Covers (10)



Automotive Connector EMC Shielding (3)



Automotive Headers(2)



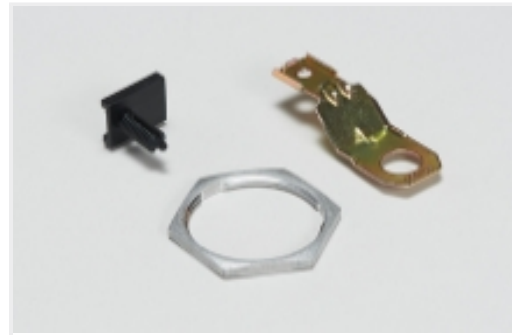
Automotive Housings(17)



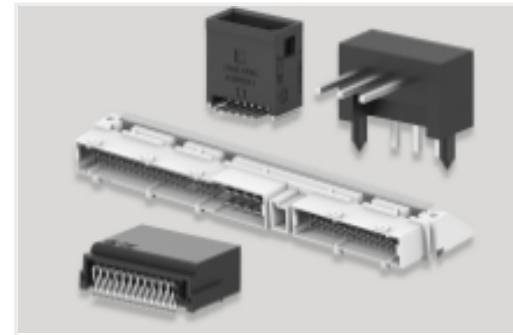
Electric, Hybrid & Fuel Cell Cable Assemblies(17)



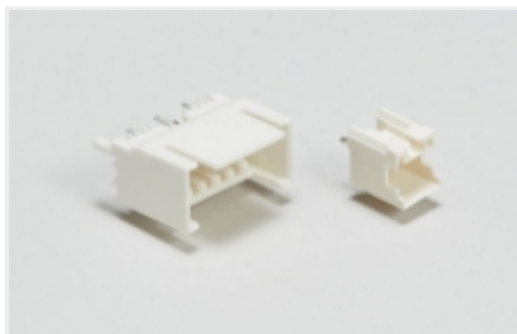
High Voltage Wire Processing Equipment(13)



Other Automotive Connector Accessories(3)



PCB Headers & Receptacles(2)



Wire-to-Board Headers & Receptacles (1)

Customers Also Bought



TE Part #2103170-1
INNER HOUSING, CAP, HVA280-2PHM



TE Part #2329360-1
PB OFF/ON RC BLK M1 TERM. IP68



TE Part #2103154-1
CABLE SEAL, SIZE 1, HVA280



TE Part #2399666-2
H&S 95mm, Inner spacer



TE Part #2141262-3
SHIELDING,EMC



TE Part #1587985-1
INNER HSG SUBASSY, HVA280-2PHM



TE Part #4-2103015-1
PLUG SUBASSY, A, HVA280-2PHM F



TE Part #2141264-3
SINGLE WIRE SEAL,AMP MCP6.3/4.8K



Documents

CAD Files

[3D PDF](#)

3D

Customer View Model

[ENG_CVM_CVM_YHVA630-2PHM-4MM-A_A.2d_dxf.zip](#)

English

Customer View Model

[ENG_CVM_CVM_YHVA630-2PHM-4MM-A_A.3d_igs.zip](#)

English

Customer View Model

[ENG_CVM_CVM_YHVA630-2PHM-4MM-A_A.3d_stp.zip](#)

English

By downloading the CAD file I accept and agree to the [Terms and Conditions](#) of use.

Datasheets & Catalog Pages

[HIVONEX CONNECTORS & CHARGING SOLUTIONS](#)

English

[HEMS Sample Kit YHVA630-2phm-4mm-A](#)

English

Product Specifications

[Application Specification](#)

English