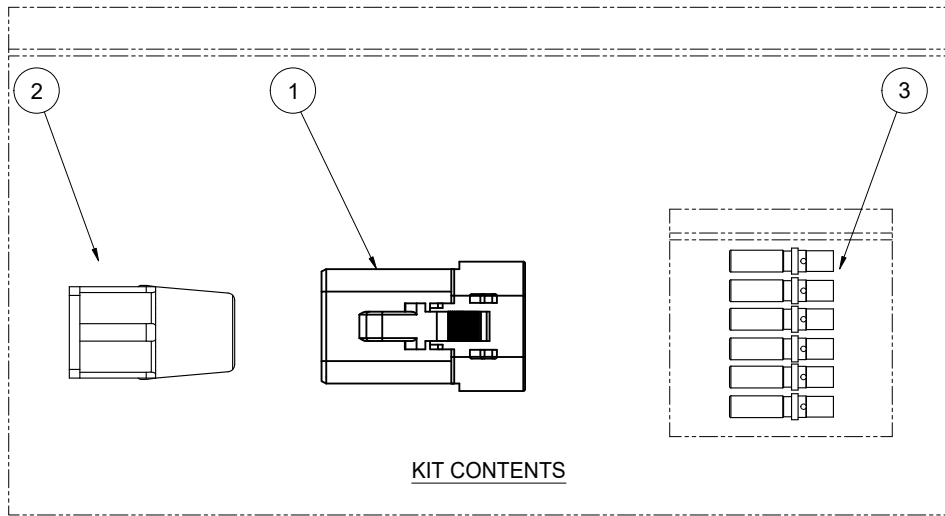
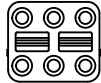


REVISIONS					
REV	ECO	DESCRIPTION	DATE	BY	APPR
A	-	RELEASE	3/3/2021	RO	WS
B	-	DWG # WAS ATP06-6S-KIT01 ADDED A & B VERSIONS AND CHART	10/18/2024	JHEAD	DH

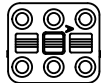


KIT CONTENTS

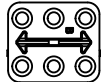
WEDGELOCK OPTIONS
FACE VIEWS



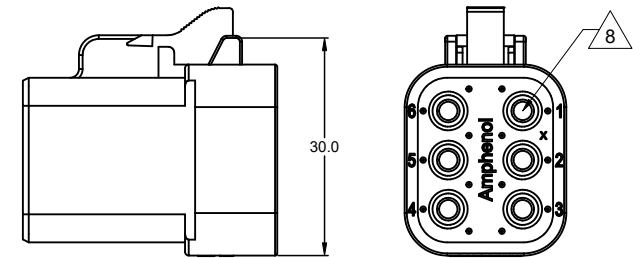
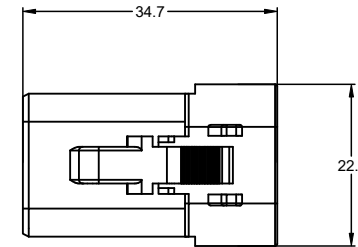
AWP-6S



AWP-6SA



AWP-6SB



REFERENCE DIMENSIONS - ASSEMBLED PLUG

NOTES: UNLESS OTHERWISE SPECIFIED

- MATERIAL:
HOUSING: THERMOPLASTIC; COLOR: GREY
WEDGELOCK: THERMOPLASTIC; COLOR: SEE CHART
SEALS: SILICONE RUBBER
CONTACTS: COPPER ALLOY; NICKEL PLATED

- SPECIFICATIONS:
2.1 CURRENT RATING: 25 AMPS
2.2 OPERATING TEMPERATURE: -55°C TO +125°C
2.3 DIELECTRIC WITHSTANDING VOLTAGE: LESS THAN 2 MILLIAMPS CURRENT LEAKAGE @ 1500 VOLTS AC.
2.4 INSULATION RESISTANCE: 1000 MEGOHMS MIN @ 25°C.
2.5 CONTACT MILLIVOLT DROP: 60 MILLIVOLT DROP @ 25 AMP TEST CURRENT.
2.6 MOISTURE RESISTANCE: IP67 (MATED CONDITION)
2.7 CONNECTOR MATING CYCLE DURABILITY: 100 CYCLES

- AVAILABLE HAND CRIMPER: CA-5D12
- ALL COMPONENTS ARE RoHS COMPLIANT.
- ALL DIMENSIONS ARE FOR REFERENCE USE ONLY.

6 CONTACTS INCLUDED IN KIT:
SOCKET STYLE, SOLID, SIZE 12, WIRE SIZE 12-14 AWG

7. MATING PART: ATP04-6P* RECEPTACLE
8 CONTACT SIZE AND REAR SEAL WIRE RANGE:

CONTACT SIZE	MIN. INSUL. O.D.	MAX. INSUL. O.D.	TYPICAL WIRE RANGE
12	3.40 mm (.134 in)	4.95 mm (.195 in)	10 - 14 AWG

KIT P/N	PLUG P/N	CONTACTS (6)	WEDGELOCK	WEDGELOCK COLOR
ATP06-6S-KIT01	ATP06-6S	AT62-203-12141	AWP-6S	ORANGE
ATP06-6SA-KIT01	ATP06-6S	AT62-203-12141	AWP-6SA	GRAY
ATP06-6SB-KIT01	ATP06-6S	AT62-203-12141	AWP-6SB	BLACK

QUANTITY	PART NUMBER	DESCRIPTION	ITEM
MATERIALS LIST			
Amphenol			
Sine Systems - www.amphenol-sine.com 44724 Morley Drive Clinton Township, MI 48036			
KIT, ATP SERIES, 6 POSITION PLUG, SOCKET CONTACTS, AND WEDGELOCK			
UNLESS OTHERWISE SPECIFIED:		SIGNATURES:	DATE:
1) All dimensions are in millimeters.		DRAWN: RO	3/2/2021
2) Tolerances are as follows:		CHECKED: WS	3/2/2021
1 PL DEC ±0.25 Fractions ±1/64		ENGINEER: RO	
2 PL DEC ±0.15 Angles ±1°		APPROVAL: WS	3/2/2021
3) Note reference =		CUSTOMER:	
MATERIAL SPECIFICATIONS:		THIS DRAWING IS SUPPLIED FOR INFORMATION ONLY. DESIGN FEATURES, SPECIFICATIONS AND PERFORMANCE DATA SHOWN HEREON ARE THE PROPERTY OF THE AMPHENOL CORPORATION. NO RIGHTS OF REPRODUCTION ARE GRANTED. ALL DIMENSIONS ARE SUBJECT TO NORMAL MANUFACTURING VARIATIONS.	
PROCESS SPECIFICATIONS:		SIZE: C	TYPE: C-
NEXT ASSY:		DWG NO: ATP06-6SX-KIT01	REVISION: B
		SCALE: NONE	SHEET 1 OF 1

TITLE: KIT ATP SERIES 6POS PLUG SOCKET CONTACTS AND WEDGELOCK
DWG NO: ATP06-6SX-KIT01
REV: B
SHEET 1 OF 1