

## Han K 3/0 Pos. male Insert Screw Term.

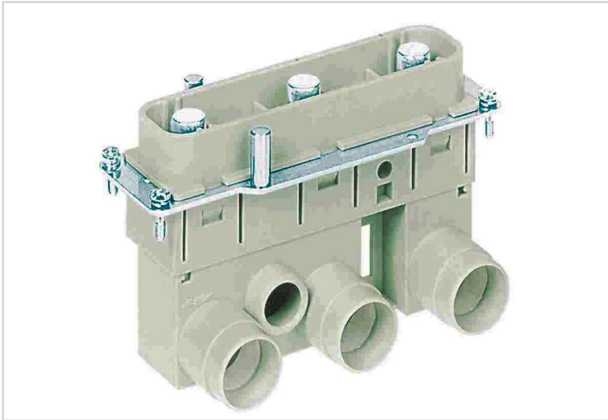


Image is for illustration purposes only. Please refer to product description.

|                    |   |
|--------------------|---|
| Part number        | 09 38 005 2622  |
| Specification      | Han K 3/0 Pos. male Insert Screw Term.  |
| HARTING eCatalogue | <a href="https://b2b.harting.com/09380052622">https://b2b.harting.com/09380052622</a> |

### Identification

|                |            |
|----------------|------------|
| Category       | Inserts    |
| Series         | Han-Com®   |
| Identification | Han® K 3/0 |
| Specification  | Angled     |

### Version

|                    |                         |
|--------------------|-------------------------|
| Termination method | Axial screw termination |
| Gender             | Male                    |
| Size               | 24 B                    |
| Number of contacts | 3                       |

### Technical characteristics

|                                   |                           |
|-----------------------------------|---------------------------|
| Conductor cross-section           | 35 ... 70 mm <sup>2</sup> |
| Rated current                     | 200 A                     |
| Rated voltage conductor-earth     | 1,150 V                   |
| Rated voltage conductor-conductor | 2,000 V                   |
| Rated impulse voltage             | 8 kV                      |
| Pollution degree                  | 3                         |
| Rated current acc. to UL          | 200 A                     |
| Rated voltage acc. to UL          | 600 V                     |
| Rated current acc. to CSA         | 160 A                     |
| Rated voltage acc. to CSA         | 600 V                     |
| Insulation resistance             | >10 <sup>10</sup> Ω       |



Pushing Performance  
Since 1945

## Technical characteristics

|                      |  |
|----------------------|--|
| Contact resistance   | ≤0.2 mΩ  |
| Stripping length     | 22 mm  |
| Tightening torque    | 8 Nm @ 35 mm <sup>2</sup><br>9 Nm @ 50 mm <sup>2</sup><br>10 Nm @ 70 mm <sup>2</sup> |
| Limiting temperature | -40 ... +125 °C  |
| Mating cycles        | ≥500   |

## Material properties

|   |  |
|---|--|
| Material (insert)                         | Polycarbonate (PC)                                     |
| Colour (insert)                           | RAL 7032 (pebble grey)                                 |
| Material (contacts)                       | Copper alloy   |
| Surface (contacts)                        | Silver plated  |
| Material flammability class acc. to UL 94 | V-0  |
| RoHS                                      | compliant with exemption                               |
| RoHS exemptions                           | 6(c): Copper alloy containing up to 4 % lead by weight |
| ELV status                                | compliant with exemption                               |
| China RoHS                                | 50   |
| REACH Annex XVII substances               | Not contained  |
| REACH ANNEX XIV substances                | Not contained  |
| REACH SVHC substances                     | Yes  |
| REACH SVHC substances                     | Lead   |
| ECHA SCIP number                          | 5dbb3851-b94e-4e88-97a1-571845975242                   |
| California Proposition 65 substances      | Yes  |
| California Proposition 65 substances      | Lead<br>Nickel   |
| Fire protection on railway vehicles       | EN 45545-2 (2020-08)                                   |
| Requirement set with Hazard Levels        | R22 (HL 1-3)<br>R23 (HL 1-3)                           |

## Specifications and approvals

|                |  |
|----------------|--|
| Specifications | IEC 60664-1<br>IEC 61984                                   |
| UL / CSA       | UL 1977 ECBT2.E235076<br>CSA-C22.2 No. 182.3 ECBT8.E235076 |



**Pushing Performance**  
Since 1945

## Specifications and approvals

|           |        |
|-----------|--------|
| Approvals | DNV GL |
|-----------|--------|

## Commercial data

|                                |   |
|--------------------------------|---|
| Packaging size                 | 1   |
| Net weight                     | 402.06 g  |
| Country of origin              | Romania   |
| European customs tariff number | 85366990  |
| GTIN                           | 5713140056169                                     |
| ETIM                           | EC000438  |
| eCl@ss                         | 27440205 Contact insert for industrial connectors |