

## Han 6HvE-F-c

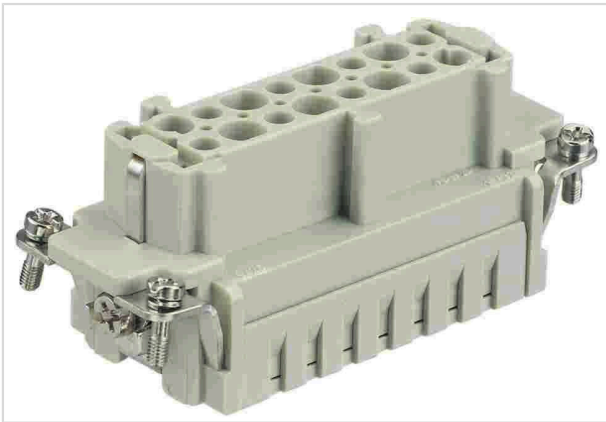


Image is for illustration purposes only. Please refer to product description.

|                    |   |
|--------------------|---|
| Part number        | 09 34 006 2702  |
| Specification      | Han 6HvE-F-c  |
| HARTING eCatalogue | <a href="https://b2b.harting.com/09340062702">https://b2b.harting.com/09340062702</a> |

### Identification

|          |           |
|----------|-----------|
| Category | Inserts   |
| Series   | Han Hv E® |

### Version

|                                   |   |
|-----------------------------------|---|
| Termination method                | Crimp termination                       |
| Gender                            | Female                                  |
| Size                              | 16 B                                    |
| Number of contacts                | 8                                       |
| Number of power contacts          | 6                                       |
| Number of special contacts        | 2                                       |
| Specification of special contacts | Relay contact                           |
| PE contact                        | Yes                                     |
| Details                           | Please order crimp contacts separately. |

### Technical characteristics

|                               |                           |
|-------------------------------|---------------------------|
| Conductor cross-section       | 0.5 ... 4 mm <sup>2</sup> |
| Conductor cross-section [AWG] | AWG 20 ... AWG 12         |
| Rated current                 | 16 A                      |
| Rated voltage                 | 830 V                     |
| Rated impulse voltage         | 8 kV                      |
| Pollution degree              | 3                         |
| Rated voltage acc. to UL      | 600 V                     |
| Rated voltage acc. to CSA     | 600 V                     |



Pushing Performance  
Since 1945

## Technical characteristics

|                       |                   |
|-----------------------|-------------------|
| Insulation resistance | $>10^{10} \Omega$ |
| Limiting temperature  | -40 ... +125 °C   |
| Mating cycles         | $\geq 500$        |

## Material properties

|   |   |
|---|---|
| Material (insert)                         | Polycarbonate (PC)  |
| Colour (insert)                           | RAL 7032 (pebble grey)                                    |
| Material flammability class acc. to UL 94 | V-0   |
| RoHS                                      | compliant   |
| ELV status                                | compliant   |
| China RoHS                                | e   |
| REACH Annex XVII substances               | Not contained   |
| REACH ANNEX XIV substances                | Not contained   |
| REACH SVHC substances                     | Yes   |
| REACH SVHC substances                     | Potassium 1,1,2,2,3,3,4,4,4-nonafluorobutane-1-sulphonate |
| California Proposition 65 substances      | Yes   |
| California Proposition 65 substances      | Lead<br>Nickel  |
| Fire protection on railway vehicles       | EN 45545-2 (2020-08)                                      |
| Requirement set with Hazard Levels        | R26   |

## Specifications and approvals

|                |                          |
|----------------|--------------------------|
| Specifications | IEC 60664-1<br>IEC 61984 |
| UL / CSA       | UL 1977 ECBT2.E235076    |

## Commercial data

|                                |   |
|--------------------------------|---|
| Packaging size                 | 1   |
| Net weight                     | 63.82 g   |
| Country of origin              | Germany   |
| European customs tariff number | 85366990  |
| GTIN                           | 5713140053243                                     |
| eCl@ss                         | 27440205 Contact insert for industrial connectors |