

YELLOCK MONOBLOCK 60 FEMALE

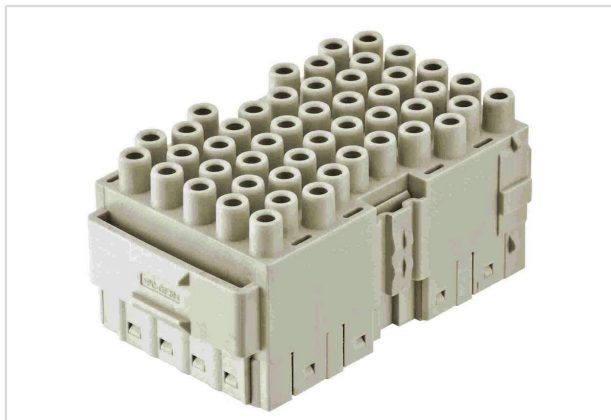


Image is for illustration purposes only. Please refer to product description.

Part number	11 05 648 3101
Specification	YELLOCK MONOBLOCK 60 FEMALE
HARTING eCatalogue	https://b2b.harting.com/11056483101

Identification

Category	Inserts
Series	Han-Yellock®
Element	Monoblock

Version

Termination method	Crimp termination
Gender	Female
Size	Han-Yellock® 60
Number of contacts	48
Details	Please order crimp contacts separately.

Technical characteristics

Conductor cross-section	0.14 ... 4 mm ²
Rated current	16 A
Rated voltage	500 V
Rated impulse voltage	6 kV
Pollution degree	3
Insulation resistance	>10 ¹⁰ Ω
Limiting temperature	-40 ... +125 °C
Mating cycles	≥500

Material properties

Material (insert)	Polycarbonate (PC)
-------------------	--------------------



Pushing Performance
Since 1945

Material properties

Colour (insert)	RAL 7032 (pebble grey)
Material flammability class acc. to UL 94	V-0
RoHS	compliant
ELV status	compliant
China RoHS	e
REACH Annex XVII substances	Not contained
REACH ANNEX XIV substances	Not contained
REACH SVHC substances	Not contained
Fire protection on railway vehicles	EN 45545-2 (2020-08)
Requirement set with Hazard Levels	R22 (HL 1-3) R23 (HL 1-3)

Specifications and approvals

Specifications	IEC 60664-1 IEC 61984
UL / CSA	UL 1977 ECBT2.E235076
Approvals	DNV GL

Commercial data

Packaging size	1
Net weight	38 g
Country of origin	Germany
European customs tariff number	85366990
GTIN	5713140109810
ETIM	EC000438
eCl@ss	27440205 Contact insert for industrial connectors