

Han K 3/0 Pos. male Insert Screw Term.

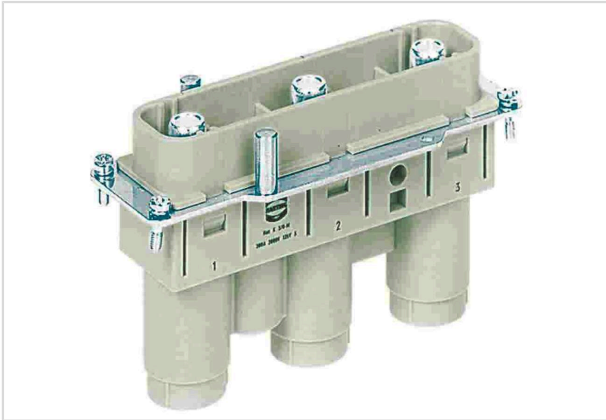


Image is for illustration purposes only. Please refer to product description.

| | |
|--------------------|---|
| Part number | 09 38 005 2621 |
| Specification | Han K 3/0 Pos. male Insert Screw Term. |
| HARTING eCatalogue | https://b2b.harting.com/09380052621 |

Identification

| | |
|----------------|------------|
| Category | Inserts |
| Series | Han-Com® |
| Identification | Han® K 3/0 |
| Specification | Straight |

Version

| | |
|--------------------|-------------------------|
| Termination method | Axial screw termination |
| Gender | Male |
| Size | 24 B |
| Number of contacts | 3 |

Technical characteristics

| | |
|-----------------------------------|---------------------------|
| Conductor cross-section | 35 ... 70 mm ² |
| Rated current | 200 A |
| Rated voltage conductor-earth | 1,150 V |
| Rated voltage conductor-conductor | 2,000 V |
| Rated impulse voltage | 8 kV |
| Pollution degree | 3 |
| Rated current acc. to UL | 200 A |
| Rated voltage acc. to UL | 600 V |
| Rated current acc. to CSA | 160 A |
| Rated voltage acc. to CSA | 600 V |
| Insulation resistance | >10 ¹⁰ Ω |



Pushing Performance
Since 1945

Technical characteristics

| | |
|----------------------|--|
| Contact resistance | ≤0.2 mΩ |
| Stripping length | 22 mm |
| Tightening torque | 8 Nm @ 35 mm ² 9 Nm @ 50 mm ² 10 Nm @ 70 mm ² |
| Limiting temperature | -40 ... +125 °C |
| Mating cycles | ≥500 |

Material properties

| | |
|---|--|
| Material (insert) | Polycarbonate (PC) |
| Colour (insert) | RAL 7032 (pebble grey) |
| Material (contacts) | Copper alloy |
| Surface (contacts) | Silver plated |
| Material flammability class acc. to UL 94 | V-0 |
| RoHS | compliant with exemption |
| RoHS exemptions | 6(c): Copper alloy containing up to 4 % lead by weight |
| ELV status | compliant with exemption |
| China RoHS | 50 |
| REACH Annex XVII substances | Not contained |
| REACH ANNEX XIV substances | Not contained |
| REACH SVHC substances | Yes |
| REACH SVHC substances | Lead |
| ECHA SCIP number | 5dbb3851-b94e-4e88-97a1-571845975242 |
| California Proposition 65 substances | Yes |
| California Proposition 65 substances | Lead Nickel |
| Fire protection on railway vehicles | EN 45545-2 (2020-08) |
| Requirement set with Hazard Levels | R22 (HL 1-3) R23 (HL 1-3) |

Specifications and approvals

| | |
|----------------|--|
| Specifications | IEC 60664-1 IEC 61984 |
| UL / CSA | UL 1977 ECBT2.E235076 CSA-C22.2 No. 182.3 ECBT8.E235076 |



Pushing Performance
Since 1945

Specifications and approvals

| | |
|-----------|--------|
| Approvals | DNV GL |
|-----------|--------|

Commercial data

| | |
|--------------------------------|---|
| Packaging size | 1 |
| Net weight | 308.8 g |
| Country of origin | Romania |
| European customs tariff number | 85366990 |
| GTIN | 5713140056152 |
| ETIM | EC000438 |
| eCl@ss | 27440205 Contact insert for industrial connectors |