

## Han EMC 64 Hood Top Entry Central Lever

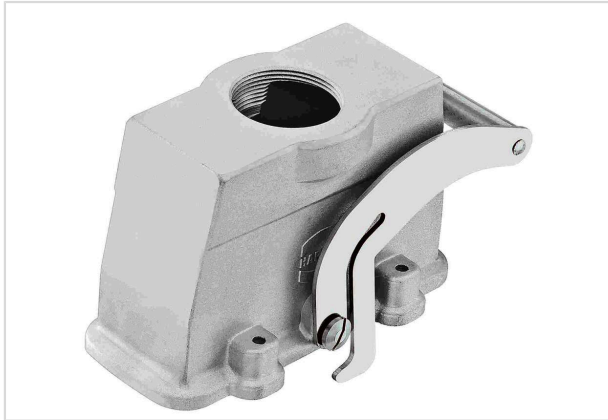


Image is for illustration purposes only. Please refer to product description.

Part number	09 62 064 0481
Specification	Han EMC 64 Hood Top Entry Central Lever
HARTING eCatalogue	<a href="https://b2b.harting.com/09620640481">https://b2b.harting.com/09620640481</a>

### Identification

Category	Hoods / Housings
Series of hoods/housings	Han <sup>®</sup> EMC
Type of hood/housing	Hood

### Version

Size	24 B
Version	Top entry
Number of cable entries	1
Cable entry	1x Pg 29
Locking type	Central locking lever (on the hood)
Field of application	Hoods/Housings for higher EMC requirements

### Technical characteristics

Limiting temperature	-40 ... +125 °C
Note on the limiting temperature	For use as a connector according to IEC 61984.
Degree of protection acc. to IEC 60529	IP65
Type rating acc. to UL 50 / UL 50E	4 12

### Material properties

Material (hood/housing)	Aluminium die-cast
Surface (hood/housing)	Uncoated
Colour (hood/housing)	Unpainted



Pushing Performance  
Since 1945

## Material properties

Material (locking)	Stainless steel
RoHS	compliant
ELV status	compliant
China RoHS	e
REACH Annex XVII substances	Not contained
REACH ANNEX XIV substances	Not contained
REACH SVHC substances	Not contained
California Proposition 65 substances	Yes
California Proposition 65 substances	Nickel

## Specifications and approvals

UL / CSA	UL 1977 ECBT2.E235076 CSA-C22.2 No. 182.3 ECBT8.E235076
Approvals	CE DNV GL

## Commercial data

Packaging size	1
Net weight	532 g
Country of origin	Germany
European customs tariff number	85389099
GTIN	5713140073722
ETIM	EC000437
eCl@ss	27440202 Shell for industrial connectors