

## Han-Modular ECO coupler IP20, without PE

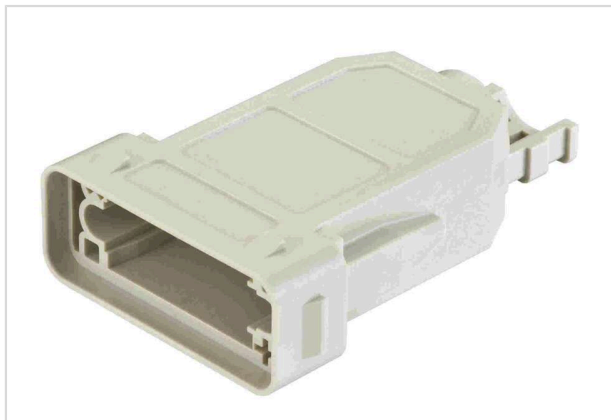


Image is for illustration purposes only. Please refer to product description.

Part number	09 14 001 0722
Specification	Han-Modular ECO coupler IP20, without PE
HARTING eCatalogue	<a href="https://b2b.harting.com/09140010722">https://b2b.harting.com/09140010722</a>

### Identification

Category	Hoods / Housings
Series of hoods/housings	Han-Modular® ECO
Type of hood/housing	Cable to cable housing

### Version

Size	Modular ECO
Version	Top entry
Number of cable entries	1
Cable entry	1x
Locking type	Snap-in latches

### Technical characteristics

Limiting temperature	-40 ... +85 °C
Note on the limiting temperature	For use as a connector according to IEC 61984.
Mating cycles	≥500
Degree of protection acc. to IEC 60529	IP20
Cable diameter	3 ... 14.5 mm

### Material properties

Material (hood/housing)	Polycarbonate (PC)
Colour (hood/housing)	RAL 7032 (pebble grey)
Material flammability class acc. to UL 94	V-0
RoHS	compliant



Pushing Performance  
Since 1945

## Material properties

ELV status	compliant
China RoHS	e
REACH Annex XVII substances	Not contained
REACH ANNEX XIV substances	Not contained
REACH SVHC substances	Not contained
California Proposition 65 substances	Yes
California Proposition 65 substances	Nickel
Fire protection on railway vehicles	EN 45545-2 (2020-08)
Requirement set with Hazard Levels	R22 (HL 1-3) R23 (HL 1-3)

## Specifications and approvals

Specifications	IEC 60664-1 IEC 61984
Approvals	CE

## Commercial data

Packaging size	2
Net weight	33.44 g
Country of origin	Germany
European customs tariff number	85389099
GTIN	5713140019102
ETIM	EC000437
eCl@ss	27440202 Shell for industrial connectors