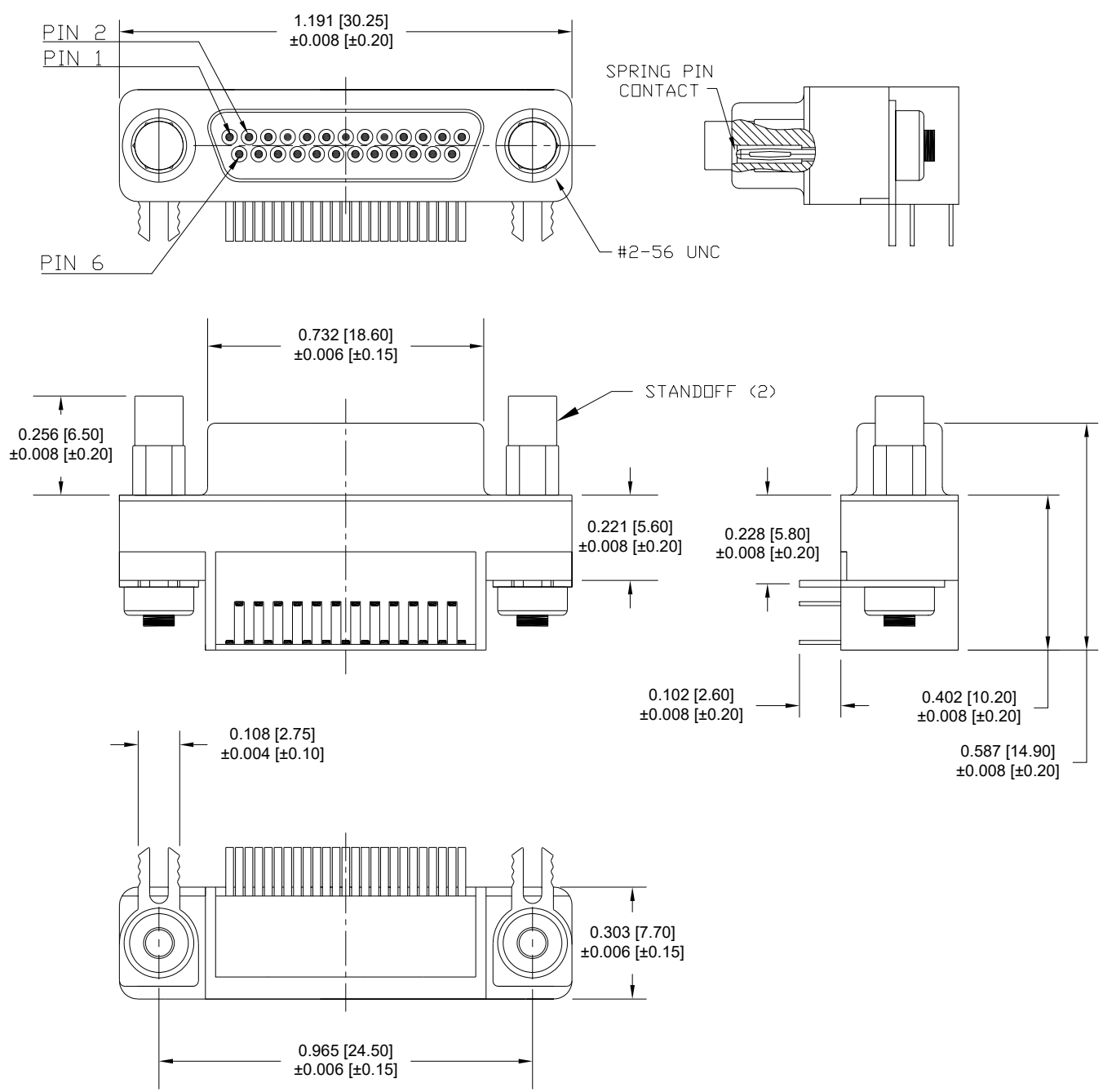


DESCRIPTION: MICRO D-SUB CONNECTOR - MALE - RIGHT ANGLE



SPECIFICATIONS:

MATERIALS:
 INSULATOR: THERMOPLASTIC, UL94 V-0
 CONTACTS: 15µ" GOLD PLATED BRASS
 TIN PLATED SOLDER TAILS
 NICKEL UNDERPLATE
 TIN PLATED STEEL
 SHELL:

ELECTRICAL:
 RATED CURRENT: 1A
 D.W.V.: 500 VAC 1 MIN
 INSULATION RESISTANCE: 100 MOhms MIN.
 CONTACT RESISTANCE: 45 mOhms MAX.

ENVIRONMENT:
 OPERATING TEMPERATURE: -55°C TO +85°C

MAX TORQUE STANDOFFS: 2.5in-lbs

381-025-112L5Y5

SERIES
 POSITIONS
 GENDER
 1 = MALE
 TERMINATION
 1 = DIP SOLDER
 SHELL PLATING
 2 = TIN
 HARDWARE OPTIONS
 1 = BOARDLOCKS ONLY
 6 = STANDOFFS & BOARDLOCKS
 PLATING OPTIONS
 5 = 15u" GOLD PLATING

NOTE:
 *NOT DESIGNED TO MATE WITH NORCOMP 580-M // 581-M SERIES CONNECTORS. IF ANY QUESTIONS PLEASE CONTACT ENG@NORCOMP.NET
 **IF MATING TO NORCOMP 380 SERIES FEMALE MICRO D, STANDOFFS ON THIS CONNECTOR MUST BE REMOVED TO ALLOW FULLY FASTENED MATING

RoHS COMPLIANT

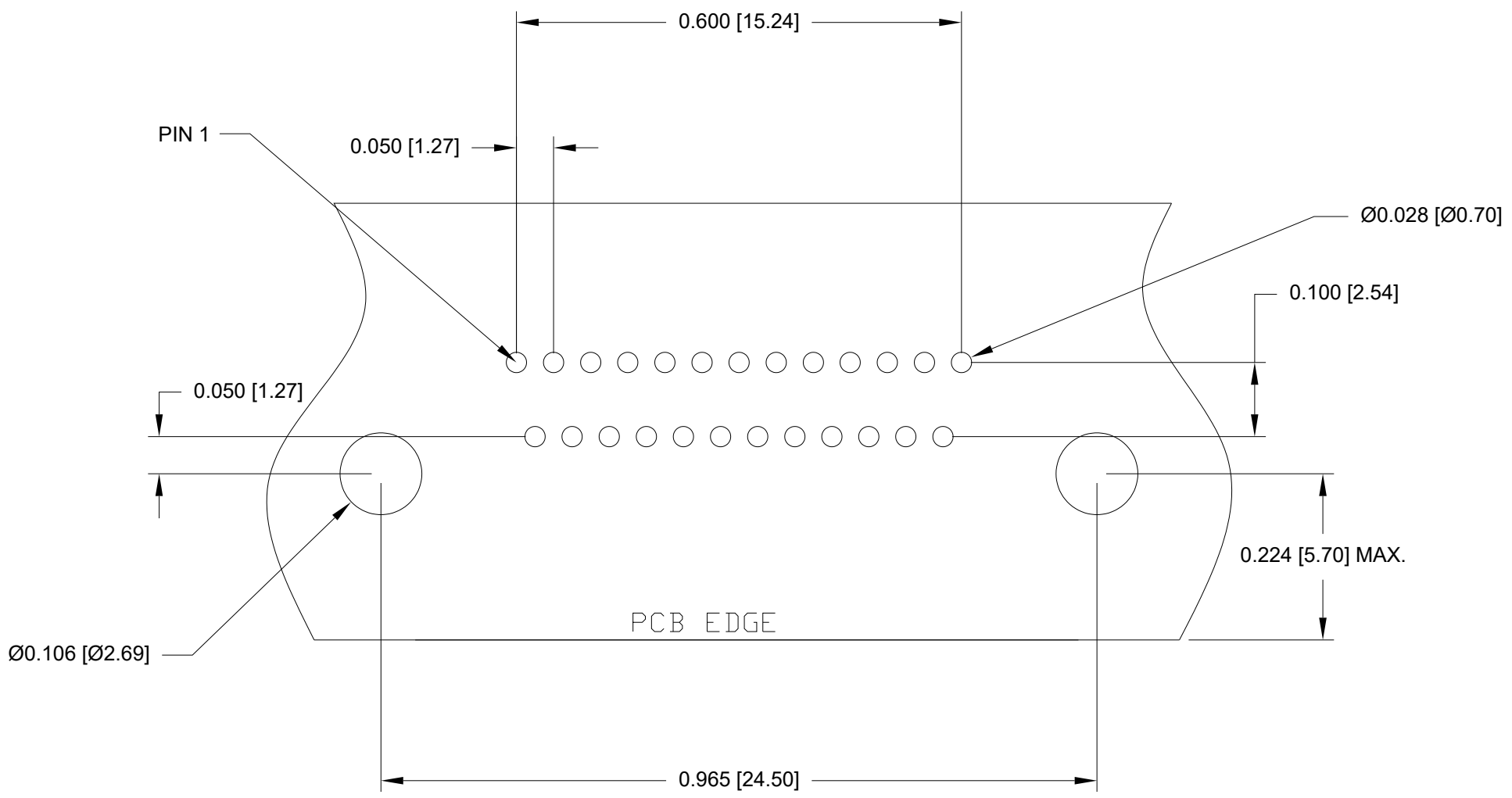
UNITS = inch [mm]

DO NOT SCALE FROM DRAWING

NC
 THESE DRAWINGS AND SPECIFICATIONS ARE THE PROPERTY OF NorComp AND SHALL NOT BE REPRODUCED, COPIED OR USED AS THE BASIS FOR THE MANUFACTURE OR SALE OF APPARATUS WITHOUT WRITTEN PERMISSION.
 DRAWN: M. SIGMON
 DATE: 08/22/2011

NorComp

SCALE: NTS
 SHEET 1 OF 2
 REV 6
 DWG NO. 381-025-112L565



RECOMMENDED RECOMMENDED PCB LAYOUT (Top View)
 (25 POSITION ONLY) TOLERANCE ± 0.002 [± 0.05]

RoHS COMPLIANT

UNITS = inch [mm]

DO NOT SCALE FROM DRAWING



THESE DRAWINGS AND SPECIFICATIONS ARE THE PROPERTY OF NorComp AND SHALL NOT BE REPRODUCED, COPIED OR USED AS THE BASIS FOR THE MANUFACTURE OR SALE OF APPARATUS WITHOUT WRITTEN PERMISSION.

DRAWN:
 M. SIGMON
 DATE:
 08/22/2011

NorComp

SCALE: NTS	SHEET 2	OF 2	REV 6
DWG NO.		381-025-112L565	