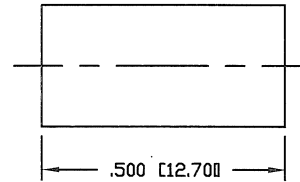
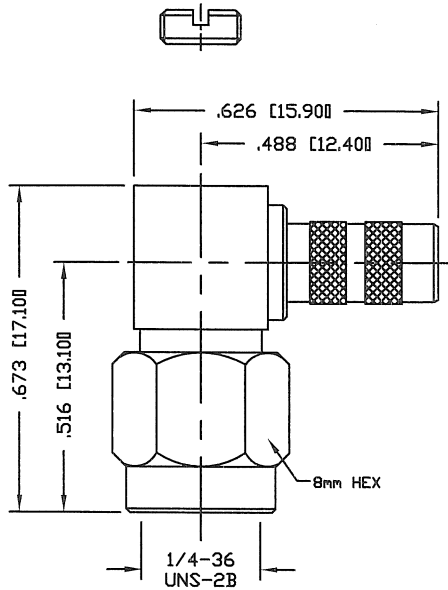


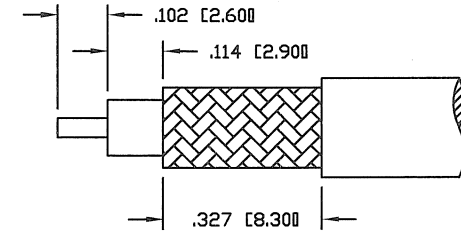
PART NO.

RP-3010-1C1

REV	DESCRIPTION	ECO/ECN	DATE	APPROVED
B	UPDATED DWG FORMAT	1051	11/14/24	JDM



RECOMMENDED CRIMP DIE: .213"



RECOMMENDED STRIPPING DIMENSIONS

SPECIFICATIONS:

IMPEDANCE: 50 Ohms
 FREQUENCY RANGE: 0-12.4 GHz
 WORKING VOLTAGE: 500 V rms Max. @ Sea Level
 INSULATION RESISTANCE: 5k M Ohms min.
 TEMPERATURE RANGE: -65°C TO 85°C
 FOR RG-55, 55A, 55B, 142, 142A, 142B, 223 & 400/U,
 ALPHA 9055, 9055B, 9223, BELDEN 8219, 83242 & 84142

NOTE: ATTACH CABLE TO CONNECTOR BY
 SOLDERING THE CABLE INNER CONDUCTOR
 TO THE PIN SLOT INSIDE THE CONNECTOR

#	DESCRIPTION	QTY	MATERIAL	FINISH
9	COUPLING NUT	1	BRASS	GOLD
8	END CAP	1	BRASS	GOLD
7	GASKET	1	SILICONE	---
6	FERRULE	1	BRASS	GOLD
5	RETAINING RING	1	Be.Cu.	NATURAL
4	FERRULE STUD	1	BRASS	GOLD
3	PIN	1	BRASS	GOLD
2	INSULATOR	1	PTFE	NATURAL
1	BODY	1	BRASS	GOLD

CUSTOMER OUTLINE DRAWING	
ALL DIMENSIONS ARE REFERENCE ONLY	
UNLESS OTHERWISE SPECIFIED: DIMENSIONS ARE IN INCHES AND [MILLIMETERS]	
DRAWN C. ZUNIGA	11/14/24
CHECKED	
ORJ DRAWN G. GALLEGOS	04/05/02

RoHS COMPLIANT

PROPRIETARY AND CONFIDENTIAL
 THIS DRAWING CONTAINS INFORMATION PROPRIETARY TO RF INDUSTRIES, ANY UNAUTHORIZED USE OF THIS DRAWING IS EXPRESSLY PROHIBITED WITHOUT WRITTEN PERMISSION FROM RF INDUSTRIES. ANY VIOLATION IS PUNISHABLE UNDER U.S. COPYRIGHT LAWS.

RFconnectors
 DIVISION OF RF INDUSTRIES, LTD. SAN DIEGO, CALIFORNIA
 RFINDUSTRIES.COM
 (858) 549-6340
 RFI@RFINDUSTRIES.COM

SMA PLUG CRIMP

REVERSE POLARITY, RIGHT ANGLE

CABLE GROUP	DWG NO.	REVISION
C1	RP-3010-1C1	B
FORMAT	SCALE	ENGINEERING ID
A	NTS	N/A

SHEET 1 OF 1