

## 3.50 mm TO 34 GHz

### 3.50 mm Cable Assemblies RF235



#### VSWR

RF235: 1.30 max

#### SERIES

**RF235**  
= MWC-2350-01 microwave cable with 23 AWG solid FEP Dielectric

#### END 1 CONNECTOR

**-35SJP**  
= 3.50 mm Straight Jack

**-35SPP**  
= 3.50 mm Straight Plug

#### END 2 CONNECTOR

#### OVERALL LENGTH

**-"XXXX"**  
= Overall Length in millimeters  
-0100 (100 mm) 3.94" min.

### 3.50 mm Cable Connectors PRF35



#### CONNECTORS FOR INDUSTRY STANDARD CABLES

PRF35-P-C-EP-405-SS	RG 405, Semi-Rigid
PRF35-J-C-EP-402-SS	RG 402, .141, Semi-Rigid
PRF35-J-C-EP-402-BS	RG 402, .141, Semi-Rigid
PRF35-P-C-EP-402-SS	RG 402, .141, Semi-Rigid
PRF35-P-C-EP-120A-SS	Semflex HP120
PRF35-J-C-EP-160-SS	Semflex HP160
PRF35-P-C-EP-160-SS	Semflex HP160
PRF35-P-C-EP-210A-SS	Micro-Coax UFA210A

For a complete list of 3.50 mm cable connectors, visit [www.samtec.com?PRF35](http://www.samtec.com?PRF35)

P-C = Cable Plug

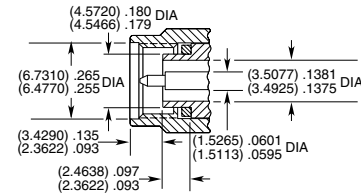
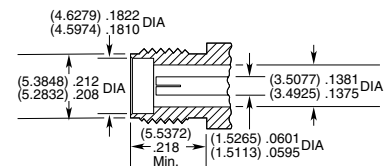
J-C = Cable Jack

EP = Plating (50 μ" Gold center contact, passivated outer contact)

SS = Straight, Solder Clamp

BS = Bulkhead, Solder Clamp

#### INTERFACE STANDARD



## SSMA TO 34 GHz

### SSMA Cable Connectors PRFS1



#### CONNECTORS FOR INDUSTRY STANDARD CABLES

PRFS1-J-C-EE-405-BD	RG 405, Semi-Rigid
PRFS1-P-C-EE-405-SD	RG 405, Semi-Rigid
PRFS1-P-C-EP-141A-SS	Harbour SS402

For a complete list of SSMA cable connectors, visit [www.samtec.com?PRFS1](http://www.samtec.com?PRFS1)

P-C = Cable Plug

J-C = Cable Jack

EE = Plating (50 μ" Gold center contact & outer contact)

EP = Plating (50 μ" Gold center contact, passivated outer contact)

SS = Straight, Solder Clamp

SD = Straight, Direct Solder

BD = Bulkhead, Direct Solder

#### INTERFACE STANDARD

