



Image for illustrative purpose only

Summary

[Request a quote](#)

[Catalog](#)

Nb of contacts Fluidic	1
Number of contacts Low Voltage	10
Gender	Standard
Socket / Receptacle	Socket / Receptacle - Fixed Panel Rear Mounted
Locking system	Push-pull
Size	2P
Suggested matching part	CAB.015.NLC.C92A
Series	REDEL P - Push-Pull

https://www.lemo.com/int_en/solutions/redel/redel-p-push-pull/ckb-015-nlma.html

LEMO products and services are provided "as is". LEMO makes no warranties or representations with regard to LEMO product & services or use of them, express, implied or statutory, including for accuracy, completeness, or security. The user is fully responsible for his products and applications using LEMO components.

Technical details

Electrical Configuration

Contact Termination Low voltage	Crimp
Nb of contacts Fluidic	1
Insert configuration value	2P.015 - 1 Fluidic, 10 Low V.
Insulator	L: PEEK for solder contacts
Rated current	5 A
Test voltage (kV rms) Contact-contact	1.15
Air clearance	0.9 mm
Creepage distance	0.9 mm
Number of contacts Low Voltage	10
Gender	Standard

Form & Material

Shell style / Model id	CK - Fixed receptacle with two nuts (back panel mounting)
Socket / Receptacle	Fixed Panel Rear Mounted
Housing material	PSU (Polysulfone), black
Locking system	Push-pull
Keying	B: 3 keys (alpha=0, gamma=60, Plug: male contacts, Receptacle: female contacts)
Weight	8.65 g

Environment

Technical domain	Energy and Industrial, Medical, Test and Measurement, Transportation, Aerospace and UAV
Environmental sealing (IP rating)	IP50
Endurance	>5000 mating cycles
Temperature range	-50°C / +150°C

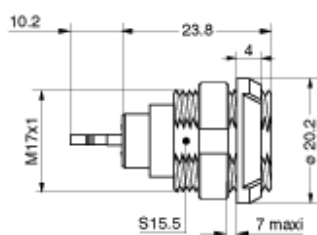
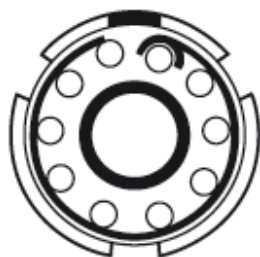
Cable fixation

Cable termination protection	Standard back nut (no additional protection)
Fixation type	Cable collet

https://www.lemo.com/int_en/solutions/redel/redel-p-push-pull/ckb-015-nlma.html

LEMO products and services are provided "as is". LEMO makes no warranties or representations with regard to LEMO product & services or use of them, express, implied or statutory, including for accuracy, completeness, or security. The user is fully responsible for his products and applications using LEMO components.

Drawings



Dimensions

	N	a
mm.	23.8	10.2
in.	0.94	0.4

Recommended By Lemo

Accessories

Replacement contact [EGG.2B.655.ZZM](#)

Tools

Spanner [COP.155.GN](#)

Positionner [DCE.91.072.BVM](#)

Extraction tool [DCC.07.04B.LAG](#)

Crimp tool [DPC.91.701.V](#)

https://www.lemo.com/int_en/solutions/redel/redel-p-push-pull/ckb-015-nlma.html

LEMO products and services are provided "as is". LEMO makes no warranties or representations with regard to LEMO product & services or use of them, express, implied or statutory, including for accuracy, completeness, or security. The user is fully responsible for his products and applications using LEMO components.