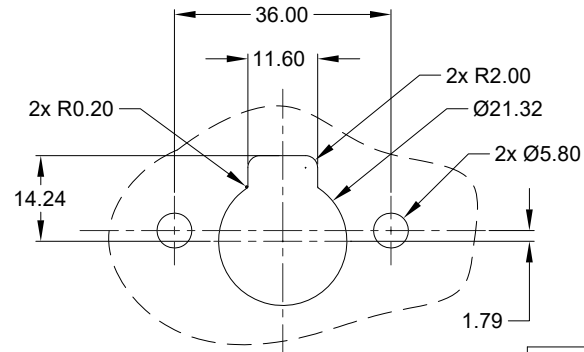
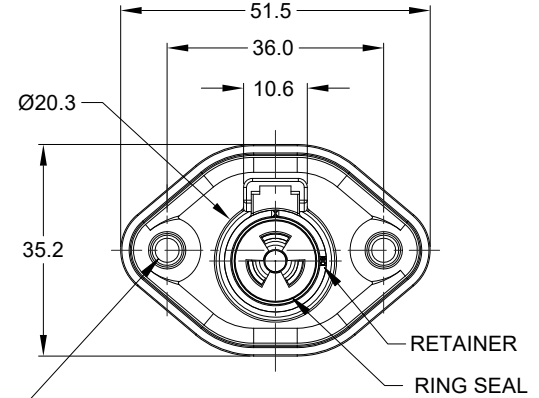
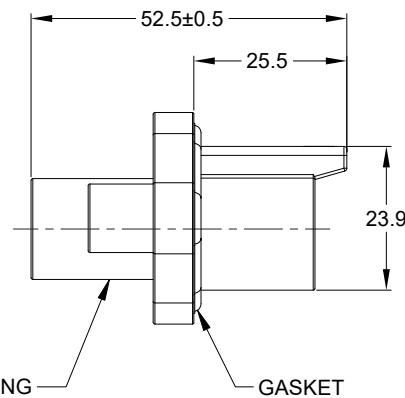
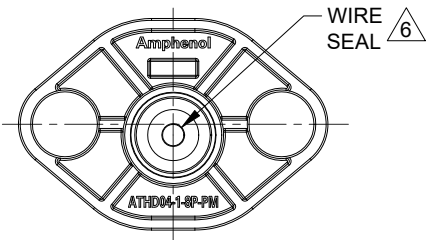
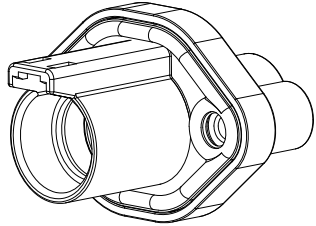


| REVISIONS |     |                  |         |      |       |
|-----------|-----|------------------|---------|------|-------|
| REV       | ECO | DESCRIPTION      | DATE    | BY   | APPR  |
| A1        | -   | RELEASED DRAWING | 10DEC21 | VITO | TOMMY |



RECOMMENDED PANEL CUTOUT

2X Ø4.0, 16.1 DP FROM MATING SURFACE  
 RECOMMENDED ATTACHMENT OPTIONS:  
 1. HEX WASHER HEAD SHEETMETAL SCREW, #10, HEX SIZE 5/16"  
 2. SELF THREAD SCREW FOR PLASTIC SUCH AS ST 4.8.  
 RECOMMENDED TORQUE : 1.9 - 2.2 N.M

NOTES: UNLESS OTHERWISE SPECIFIED

- MATERIAL:  
 HOUSING, RETAINER: THERMOPLASTIC; COLOR: BLACK  
 RING SEAL, WIRE SEAL, GASKET: SILICONE RUBBER; COLOR: RED
- MODIFICAIONS: FRONT FLANGE MOUNT;  
 SCREW BOSS
- SPECIFICATIONS:
  - CURRENT RATING: 60 AMPS
  - OPERATING TEMPERATURE: -55°C TO +125°C
  - DIELECTRIC WITHSTANDING VOLTAGE: LESS THAN 2 MILLIAMPS CURRENT LEAKAGE @ 1500 VOLTS AC.
  - INSULATION RESISTANCE: 1000 MEGOHMS MIN @ 25°C.
  - MOISTURE RESISTANCE:  
 IP68(IM OF WATER FOR A PERIOD OF 24 HOURS, MATED CONDITION);  
 IP69K (MATED CONDITION)
  - MATING CYCLE DURABILITY: 100 CYCLES
  - RoHS COMPLIANT
- MATING PART:ATHD06-1-8S\* PLUG ( \* = MODIFICATIONS )
- ALL DIMENSIONS ARE FOR REFERENCE USE ONLY.

△ CONTACT SIZE AND REAR SEAL WIRE RANGE:

| CONTACT SIZE | MIN. INSUL O.D.   | MAX. INSUL O.D.   | TYPICAL WIRE RANGE                    |
|--------------|-------------------|-------------------|---------------------------------------|
| 08           | 4.83 mm (.190 in) | 6.09 mm (.240 in) | 8 - 10 AWG (8.0-5.0 mm <sup>2</sup> ) |

| ATHD04-1-8P-PM11   |                | DESCRIPTION  |          | ITEM |          |                |  |  |  |  |  |  |  |  |            |  |      |  |  |               |  |         |  |  |                      |  |         |  |  |           |  |  |  |  |                     |  |         |  |  |                          |  |           |  |  |                         |  |  |  |  |            |  |             |  |  |
|--|----------------|--|----------|------|----------|----------------|--|--|--|--|--|--|--|--|------------|--|------|--|--|---------------|--|---------|--|--|----------------------|--|---------|--|--|-----------|--|--|--|--|---------------------|--|---------|--|--|--------------------------|--|-----------|--|--|-------------------------|--|--|--|--|------------|--|-------------|--|--|
| PART NUMBER  |                | DESCRIPTION  |          | ITEM |          |                |  |  |  |  |  |  |  |  |            |  |      |  |  |               |  |         |  |  |                      |  |         |  |  |           |  |  |  |  |                     |  |         |  |  |                          |  |           |  |  |                         |  |  |  |  |            |  |             |  |  |
| <table border="1"> <thead> <tr> <th>QUANTITY</th> <th colspan="4">MATERIALS LIST</th> </tr> </thead> <tbody> <tr> <td colspan="5"> <small>UNLESS OTHERWISE SPECIFIED</small><br/>           1) All dimensions are in metric(mm).<br/>           2) Tolerances are as follows:<br/>           1 PL DEC ±0.30 Fractions ±1/64<br/>           2 PL DEC ±0.15 Angles ±1°<br/>           3 PL DEC ±0.08<br/>           3) Note reference = △         </td> </tr> <tr> <td colspan="2">SIGNATURES</td> <td colspan="3">DATE</td> </tr> <tr> <td colspan="2">DRAWN: VITOLJ</td> <td colspan="3">10DEC21</td> </tr> <tr> <td colspan="2">CHECKED: SULLENZHANG</td> <td colspan="3">13DEC21</td> </tr> <tr> <td colspan="2">ENGINEER:</td> <td colspan="3"></td> </tr> <tr> <td colspan="2">APPROVAL: TOMMY XIE</td> <td colspan="3">14DEC21</td> </tr> <tr> <td colspan="2">MATERIAL SPECIFICATIONS:</td> <td colspan="3">CUSTOMER:</td> </tr> <tr> <td colspan="2">PROCESS SPECIFICATIONS:</td> <td colspan="3">           THIS DRAWING IS SUPPLIED FOR INFORMATION ONLY. DESIGN FEATURES, SPECIFICATIONS AND PERFORMANCE DATA SHOWN HEREON ARE THE PROPERTY OF THE AMPHENOL CORPORATION. NO RIGHTS OF REPRODUCTION ARE IMPLIED. ALL DIMENSIONS ARE SUBJECT TO NORMAL MANUFACTURING VARIATIONS.         </td> </tr> <tr> <td colspan="2">NEXT ASSY:</td> <td colspan="3">SCALE: NONE</td> </tr> </tbody> </table> |                |  |          |      | QUANTITY | MATERIALS LIST |  |  |  | <small>UNLESS OTHERWISE SPECIFIED</small><br>1) All dimensions are in metric(mm).<br>2) Tolerances are as follows:<br>1 PL DEC ±0.30 Fractions ±1/64<br>2 PL DEC ±0.15 Angles ±1°<br>3 PL DEC ±0.08<br>3) Note reference = △ |  |  |  |  | SIGNATURES |  | DATE |  |  | DRAWN: VITOLJ |  | 10DEC21 |  |  | CHECKED: SULLENZHANG |  | 13DEC21 |  |  | ENGINEER: |  |  |  |  | APPROVAL: TOMMY XIE |  | 14DEC21 |  |  | MATERIAL SPECIFICATIONS: |  | CUSTOMER: |  |  | PROCESS SPECIFICATIONS: |  | THIS DRAWING IS SUPPLIED FOR INFORMATION ONLY. DESIGN FEATURES, SPECIFICATIONS AND PERFORMANCE DATA SHOWN HEREON ARE THE PROPERTY OF THE AMPHENOL CORPORATION. NO RIGHTS OF REPRODUCTION ARE IMPLIED. ALL DIMENSIONS ARE SUBJECT TO NORMAL MANUFACTURING VARIATIONS. |  |  | NEXT ASSY: |  | SCALE: NONE |  |  |
| QUANTITY   | MATERIALS LIST |  |          |      |          |                |  |  |  |  |  |  |  |  |            |  |      |  |  |               |  |         |  |  |                      |  |         |  |  |           |  |  |  |  |                     |  |         |  |  |                          |  |           |  |  |                         |  |  |  |  |            |  |             |  |  |
| <small>UNLESS OTHERWISE SPECIFIED</small><br>1) All dimensions are in metric(mm).<br>2) Tolerances are as follows:<br>1 PL DEC ±0.30 Fractions ±1/64<br>2 PL DEC ±0.15 Angles ±1°<br>3 PL DEC ±0.08<br>3) Note reference = △   |                |  |          |      |          |                |  |  |  |  |  |  |  |  |            |  |      |  |  |               |  |         |  |  |                      |  |         |  |  |           |  |  |  |  |                     |  |         |  |  |                          |  |           |  |  |                         |  |  |  |  |            |  |             |  |  |
| SIGNATURES   |                | DATE   |          |      |          |                |  |  |  |  |  |  |  |  |            |  |      |  |  |               |  |         |  |  |                      |  |         |  |  |           |  |  |  |  |                     |  |         |  |  |                          |  |           |  |  |                         |  |  |  |  |            |  |             |  |  |
| DRAWN: VITOLJ  |                | 10DEC21  |          |      |          |                |  |  |  |  |  |  |  |  |            |  |      |  |  |               |  |         |  |  |                      |  |         |  |  |           |  |  |  |  |                     |  |         |  |  |                          |  |           |  |  |                         |  |  |  |  |            |  |             |  |  |
| CHECKED: SULLENZHANG   |                | 13DEC21  |          |      |          |                |  |  |  |  |  |  |  |  |            |  |      |  |  |               |  |         |  |  |                      |  |         |  |  |           |  |  |  |  |                     |  |         |  |  |                          |  |           |  |  |                         |  |  |  |  |            |  |             |  |  |
| ENGINEER:  |                |  |          |      |          |                |  |  |  |  |  |  |  |  |            |  |      |  |  |               |  |         |  |  |                      |  |         |  |  |           |  |  |  |  |                     |  |         |  |  |                          |  |           |  |  |                         |  |  |  |  |            |  |             |  |  |
| APPROVAL: TOMMY XIE  |                | 14DEC21  |          |      |          |                |  |  |  |  |  |  |  |  |            |  |      |  |  |               |  |         |  |  |                      |  |         |  |  |           |  |  |  |  |                     |  |         |  |  |                          |  |           |  |  |                         |  |  |  |  |            |  |             |  |  |
| MATERIAL SPECIFICATIONS:   |                | CUSTOMER:  |          |      |          |                |  |  |  |  |  |  |  |  |            |  |      |  |  |               |  |         |  |  |                      |  |         |  |  |           |  |  |  |  |                     |  |         |  |  |                          |  |           |  |  |                         |  |  |  |  |            |  |             |  |  |
| PROCESS SPECIFICATIONS:  |                | THIS DRAWING IS SUPPLIED FOR INFORMATION ONLY. DESIGN FEATURES, SPECIFICATIONS AND PERFORMANCE DATA SHOWN HEREON ARE THE PROPERTY OF THE AMPHENOL CORPORATION. NO RIGHTS OF REPRODUCTION ARE IMPLIED. ALL DIMENSIONS ARE SUBJECT TO NORMAL MANUFACTURING VARIATIONS. |          |      |          |                |  |  |  |  |  |  |  |  |            |  |      |  |  |               |  |         |  |  |                      |  |         |  |  |           |  |  |  |  |                     |  |         |  |  |                          |  |           |  |  |                         |  |  |  |  |            |  |             |  |  |
| NEXT ASSY:   |                | SCALE: NONE  |          |      |          |                |  |  |  |  |  |  |  |  |            |  |      |  |  |               |  |         |  |  |                      |  |         |  |  |           |  |  |  |  |                     |  |         |  |  |                          |  |           |  |  |                         |  |  |  |  |            |  |             |  |  |
| <p>Sine Systems - www.amphenol-sine.com<br/>         44724 Morley Drive<br/>         Clinton Township, MI 48036</p>  |                |  |          |      |          |                |  |  |  |  |  |  |  |  |            |  |      |  |  |               |  |         |  |  |                      |  |         |  |  |           |  |  |  |  |                     |  |         |  |  |                          |  |           |  |  |                         |  |  |  |  |            |  |             |  |  |
| <b>1 POS, RECEPTACLE, PIN, SIZE 8, ATHD SERIES, FLANGE MOUNT, SCREW BOSS</b>   |                |  |          |      |          |                |  |  |  |  |  |  |  |  |            |  |      |  |  |               |  |         |  |  |                      |  |         |  |  |           |  |  |  |  |                     |  |         |  |  |                          |  |           |  |  |                         |  |  |  |  |            |  |             |  |  |
| SIZE   | TYPE           | DWG NO:  | REVISION |      |          |                |  |  |  |  |  |  |  |  |            |  |      |  |  |               |  |         |  |  |                      |  |         |  |  |           |  |  |  |  |                     |  |         |  |  |                          |  |           |  |  |                         |  |  |  |  |            |  |             |  |  |
| B  | C-             | ATHD04-1-8P-PM11   | A1       |      |          |                |  |  |  |  |  |  |  |  |            |  |      |  |  |               |  |         |  |  |                      |  |         |  |  |           |  |  |  |  |                     |  |         |  |  |                          |  |           |  |  |                         |  |  |  |  |            |  |             |  |  |
| SHEET 1 OF 1   |                |  |          |      |          |                |  |  |  |  |  |  |  |  |            |  |      |  |  |               |  |         |  |  |                      |  |         |  |  |           |  |  |  |  |                     |  |         |  |  |                          |  |           |  |  |                         |  |  |  |  |            |  |             |  |  |

TITLE: 1 POS, RECEPTACLE, PIN, SIZE 8, ATHD SERIES, FLANGE MOUNT, SCREW BOSS  
 DWG NO: ATHD04-1-8P-PM11  
 REV: A1  
 SH: 1  
 OF: 1

## A Series™ - Contact Size 8 Options (Works with: ATHD and DuraMate Series)

| Machined Contacts, Pins and Sockets |  |      |      |          |      |
|-------------------------------------|--|------|------|----------|------|
| Part Number                         | Description  | Size | AWG  | Type     | Amps |
| AT60-204-08141                      | Male Contact - Pin, Copper Alloy, Nickel-Plated      | 8    | 8-10 | Machined | 60A  |
| AT62-203-08141                      | Female Contact - Socket, Copper Alloy, Nickel-Plated | 8    | 8-10 | Machined | 60A  |
| AT60-204-08141-16                   | Male Contact - Pin, Copper Alloy, Nickel-Plated      | 8    | 6    | Machined | 60A  |
| AT62-203-08141-16                   | Female Contact - Socket, Copper Alloy, Nickel-Plated | 8    | 6    | Machined | 60A  |

| Tooling - Machined Contacts |  |
|-----------------------------|--|
| Part Number                 | Description  |
| WA23                        | Heavy Duty Pneumatic Crimp Tool<br>-Uses Universal Positioner Part No. WA23-101DA and Crimp Locator MFX-3961 |
| WA23-2                      | Die Assembly<br>-for CA-5E12 Heavy Duty Pneumatic Crimp Tool, Size 8   |
| WA23-3                      | Die Assembly<br>-for CA-5E12 Heavy Duty Pneumatic Crimp Tool, Size 6   |
| WA23-10                     | Contact Locator, Size 6 and Size 8   |
| 96-978-22                   | Crimper and Dies<br>-for Size 10mm <sup>2</sup> -185mm <sup>2</sup> Wires                                    |
| AT114008                    | Contact Removal Tool, Plastic, Size 8, 8-10AWG   |