

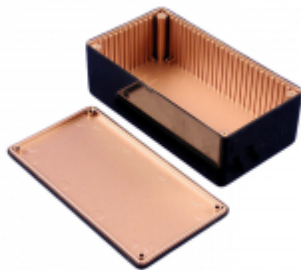


Quality Products. Service Excellence.

Multipurpose ABS Plastic Enclosures 1591R Series

EMI/ RFI Copper Conductive Coating Inside

Features:



- Ideally suited for vertical mounting of printed circuit boards; internal side walls include molded in card guides.
- Molded from flame retardant ABS plastic (material carries a UL flammability rating of 94V-0).
- Interior of each enclosure part is specially masked and sprayed with an RFI/EMI copper conductive coating (see photo above).
- Coating manufacturer specifies an attenuation of more than 75 db from 1 Mhz. to 1 Ghz.
- Designed to meet IP54.
- Lid is secured with M3 x 10 mm Philips machine screws, threaded into integral brass bushings. Perfect for applications when repetitive assembly and disassembly are required.
- Smooth black finish with black screws.



Accessories

- Plastic Flanges



Enclosures

Part Number	Color	Length (mm)	Width (mm)	Depth (mm)	Flange Kit
1591RLBK	Black	85	56	39	1591FLBK
1591RABK	Black	100	50	25	1591FABK
1591RSBK	Black	110	82	44	1591FSBK
1591RBBK	Black	112	62	31	1591FBBK
1591RCBK	Black	120	65	40	1591FCBK
1591RTBK	Black	120	80	59	1591FTBK
1591RUBK	Black	120	120	59	1591FUBK
1591RVBK	Black	120	120	94	1591FUBK
1591RGBK	Black	120.5	94	34	1591FGBK
1591RDBK	Black	150	80	50	1591FDBK
1591RHBK	Black	166	71	29	1591FHBK
1591REBK	Black	190	111	61	1591FEBK

Tags: copper, copper coating, EMI, RFI, shielded, plastic, PCB

Data subject to change without notice

