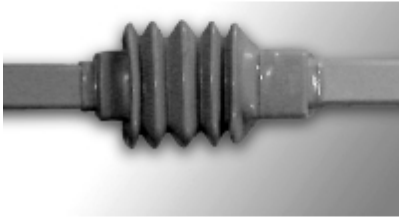


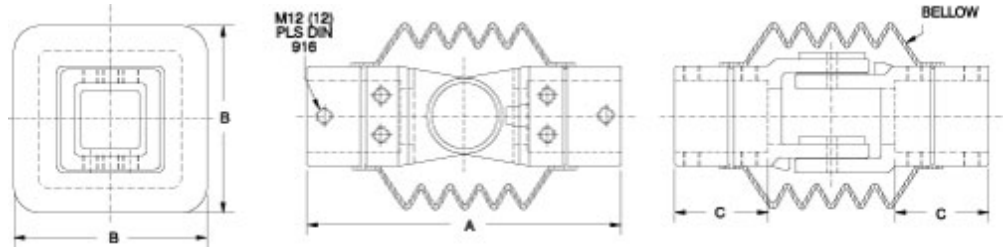


Quality Products. Service Excellence.

## Heavy Duty Intermediate Joint *HDSSIJ Series*



- 4G-s.g. cast iron.
- Integrated movement stop.
- One piece bellow.
- Two sleeves.
- Features a rotation range of 170°.



Part No.	System	A	B	C
R147-015-000R	50	236	140	70
R147-015-200R	80	320	180	97

Tags: HDSS, joint, intermediate, bellow, heavy duty, suspension, operator

Data subject to change without notice

© 2025. Hammond Manufacturing Ltd. All rights reserved.