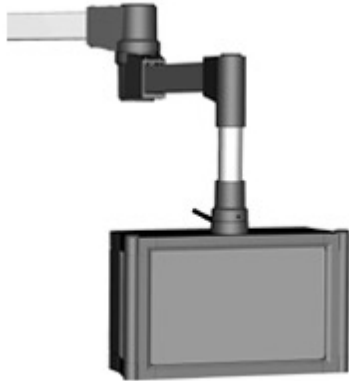




Quality Products. Service Excellence.

Tara Plus Suspension System *TPSS Series*

NEMA 12, 13



Application

- Taraplus enclosure suspension systems are designed for light and medium loads.
- The strength of tube and cast fittings provide a highly flexible robust system.

Standards

- Complies with
 - IEC 60529 IP54

Construction

- Enclosure coupling and elbow coupling fittings are die-cast from G AL SI 12 aluminum.
- Suspension tubing is steel.

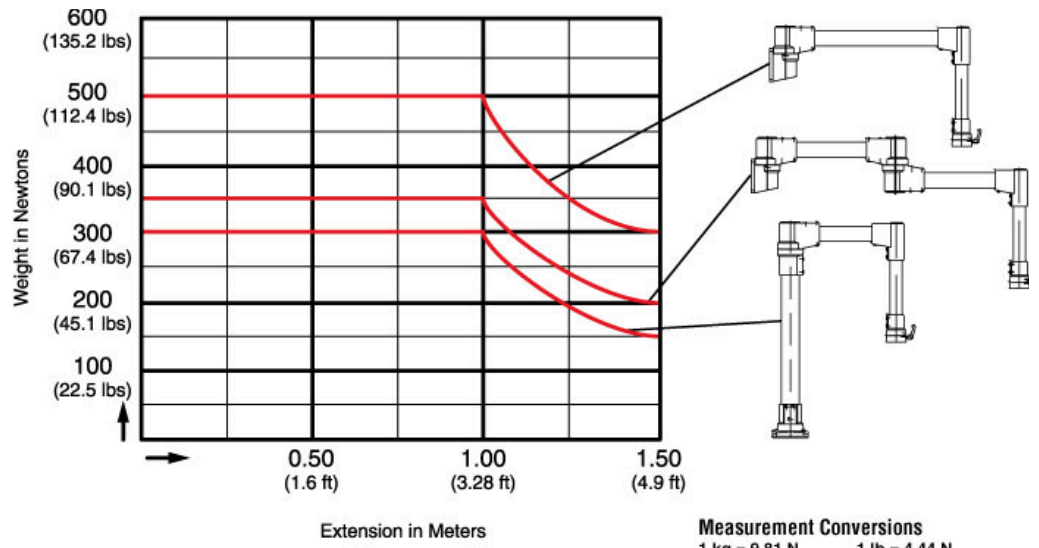
Finish

- Fittings are finished in RAL 7040 window gray.
- Suspension tubing is RAL 7035 light gray.

Accessories

- Suspension Tube
- Tilt Coupling
- Tilt Elbow Coupling
- Fixed Elbow 70
- Base 48
- Rotating Base 70
- Wall Joint
- Intermediate Joint
- Tara Plus Coupling
- Elbow Coupling
- Fixed Elbow 48
- Rotating Elbow
- Base 70
- Socket Joint
- Vertical Wall Joint

Tara Plus Suspension System (TPSS Series) - Hammond Mfg.



Measurement Conversions
 1 kg = 9.81 N 1 lb = 4.44 N
 e.g. 500 Newtons = 51 kg = 112.4 lbs
 300 Newtons = 30.6 kg = 67.4 lbs
 100 Newtons = 10.2 kg = 22.5 lbs
 1 foot = 0.305 m

Tags: taraplus, tara plus, suspension, operator, tube, fitting, light duty, medium duty

Data subject to change without notice

© 2025. Hammond Manufacturing Ltd. All rights reserved.