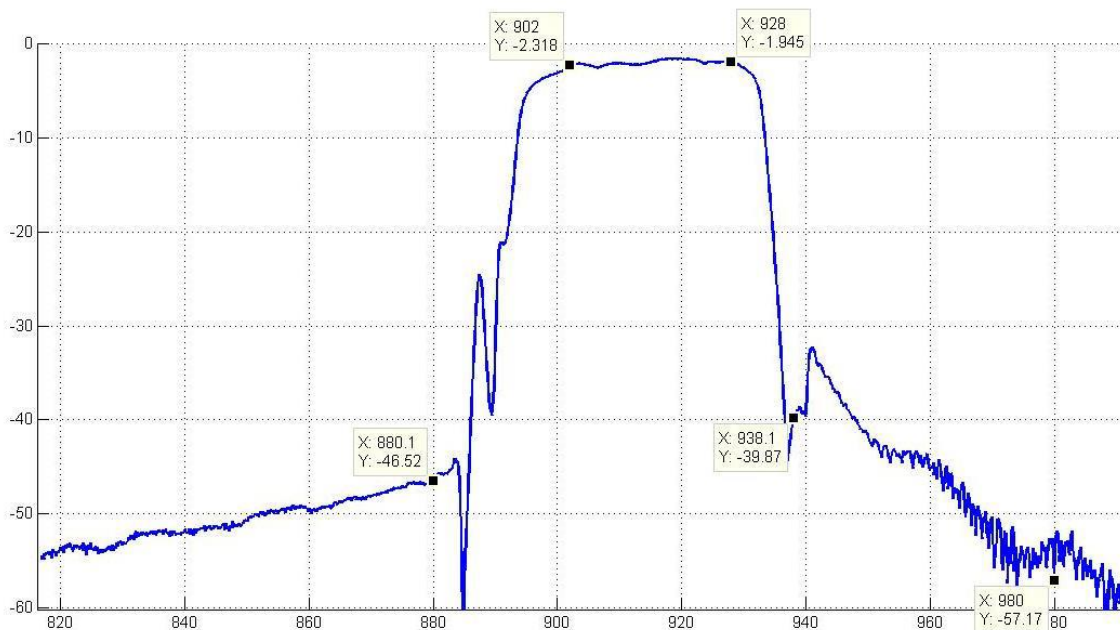


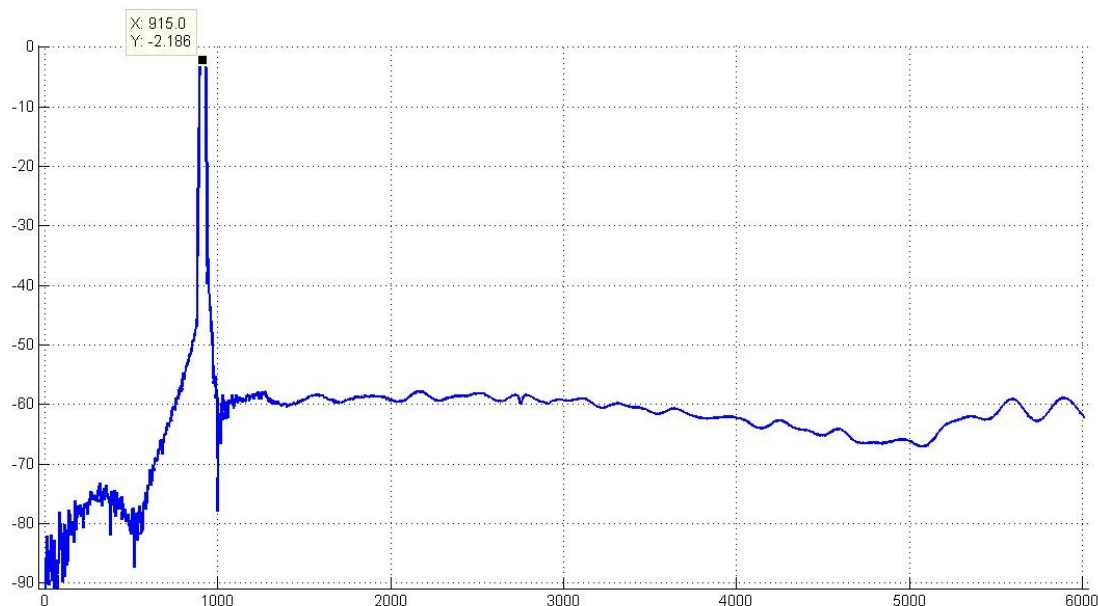
1. CHARACTERISTICS AT 25°C

Parameters	Specification	Unit
Center Frequency (Fo)	915.000	MHz
Insertion Loss (902 ~ 928MHz), typ/max	2.3 / 3.0	dB
Passband Ripple (902 ~ 928MHz), typ/max	0.8 / 1.5	dB
Attenuation, Min/typ	10 ~ 880 MHz	-35 / -47
	880 ~ 890 MHz	-20 / -25
	894 MHz	- / -8
	938 ~ 980 MHz	-30 / -33
	980 ~ 1500 MHz	-35 / -50
	1500 ~ 2500 MHz	-35 / -50
Power	10	dBm
Voltage	10	V
In/Out Impedance	50	Ω
Operating temperature Range	-40 to +85	$^{\circ}\text{C}$
Storage Temperature Range	-40 to +85	$^{\circ}\text{C}$

Note: Specification at T=25°C

Frequency Characteristics

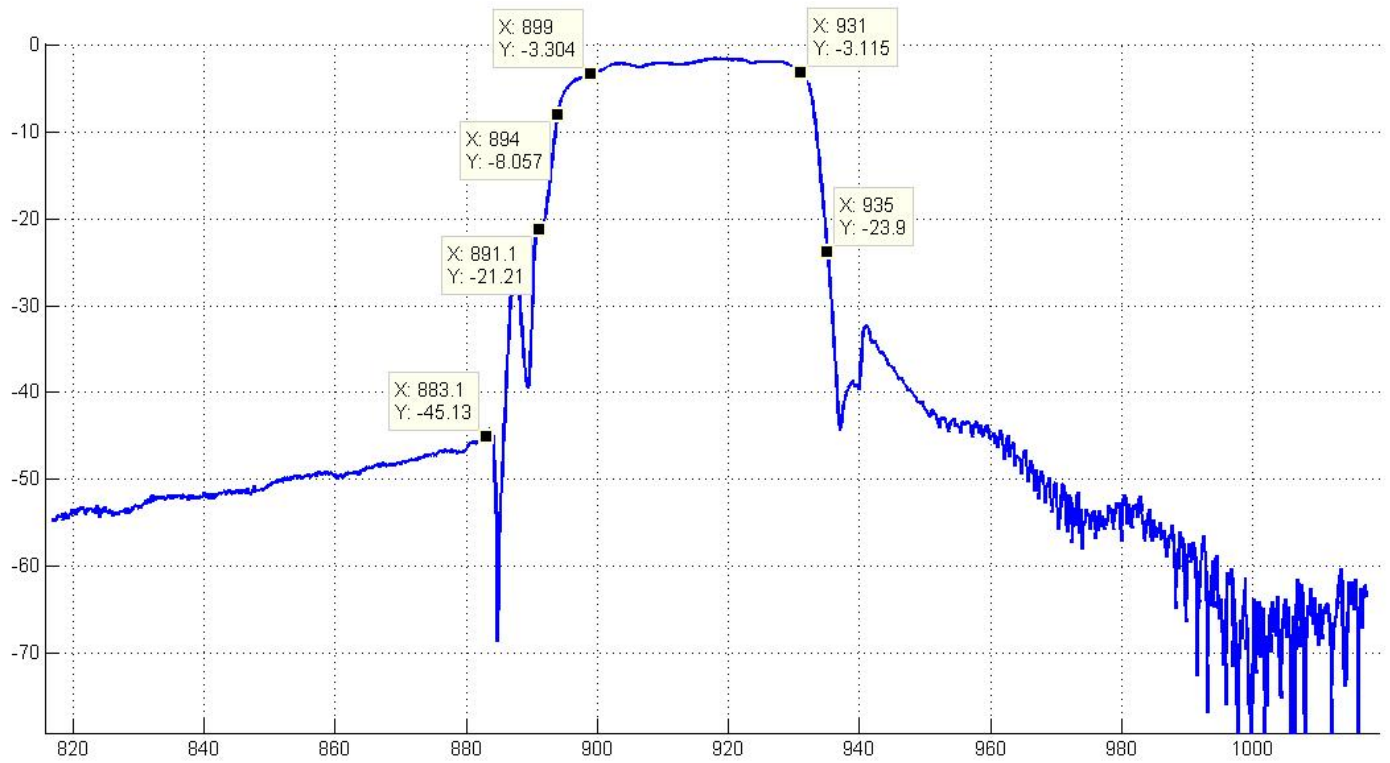




2. CHARACTERISTICS OVER -40°C TO +85°C

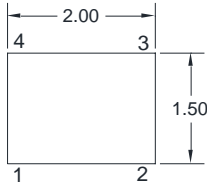
Parameters		Specification	Unit
Center Frequency (Fo)		915.000	MHz
Insertion Loss (902 ~ 928MHz), typ/max		3.0 / 3.5	dB
Passband Ripple (902 ~ 928MHz), typ/max		1.5 / 2.0	dB
Attenuation, min/typ	10 ~ 880 MHz	-35 / -45	dB
	880 ~ 890 MHz	-12 / -20	dB
	894 MHz	- / -4.5	dB
	938 ~ 980 MHz	-20 / -30	dB
	980 ~ 1500 MHz	-35 / -50	dB
	1500 ~ 2500 MHz	-35 / -50	dB
Power		10	dBm
Voltage		10	V
In/Out Impedance		50	Ω
Operating temperature Range		-40 to +85	°C
Storage Temperature Range		-40 to +85	°C

Frequency Characteristics

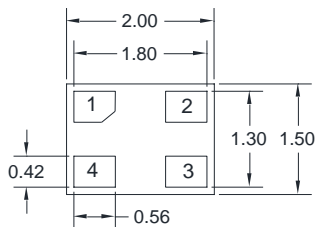


Dimension

TOP VIEW



BOTTOM VIEW



Pin Number	Function
1	Input
2	GND
3	Output
4	GND

Environmental

PARAMETER	VALUE
MOISTURE SENSITIVITY LEVEL	2
REACH – SVHC	Compliant
RoHS	Compliant
ELECTROSTATIC SENSITIVE DEVICE	Yes



APPROVAL

DRAWN BY	LP, November 15, 2016
APPROVED BY	CP, November 15, 2016
REVISION	A, Initial Release B, CP, December 2, 2016 Added Characteristics over -40°C to + 85°C Added Attenuation at 880~894MHz Added Attenuation 1500~2500MHz C, Added Environmental, AR, January 31, 2022

Raltron Electronics/RAMI Technology USA, LLC, including its affiliates, employees, agents and other persons acting on its behalf (collectively Raltron/RAMI Tech), disclaim any and all liability for any errors or inaccuracies contained in this data sheet. While Raltron/RAMI Tech has made every reasonable effort to ensure the accuracy of all product information, specifications and data contained herein, Raltron/RAMI Tech does not guarantee that the information is accurate, reliable or current. The product information is provided for reference purposes only and is subject to change, correction or revision, at any time without notice. Raltron/RAMI Tech does not assume any liability arising out of an application or use of any product described herein and disclaims any warranties expressed or implied. The user of products in such applications shall assume all risks of such use and will agree to hold Raltron/RAMI Tech, harmless against all damages.

Copyright © 2016, Raltron Electronics / RAMI Technology USA, LLC. All rights reserved. No part of this document may be reproduced in any form without the prior written permission of Raltron Electronics / RAMI Technology USA, LLC.