

1571300-3 ✓ ACTIVE

Alcoswitch

TE Internal #: 1571300-3

50 mA Tactile Switch, Round Actuator, Off (On), Stainless Steel,  
Silver Contact Plating, IP67, 24 VDC, Process Sealed

[View on TE.com >](#)



Switches > Tactile Switches



Contact Current Rating: **50 mA**  
Actuator Style: **Round Actuator**  
Operating Function: **Off (On)**  
Contact Base Material: **Stainless Steel**  
Switch Contact Plating Material: **Silver**

### Features

#### Packaging Features

Packaging Method	Reel & Box
------------------	------------

#### Body Features

Case Material	Thermoplastic
Case Color	Black
Actuator Material	Thermoplastic
Cover Material	Nickel, Silver
Actuator Force	130 g[4.58 oz]
Product Orientation	Right Angle
Actuator Color	Black

#### Configuration Features

Switch Feedback Type	Tactile
ESD Grounding Terminal	Without
Operating Function	Off (On)
Support Bracket	With



Configuration (Pole-Throw)	Single Pole - Single Throw
----------------------------	----------------------------

Number of Actuators	Single
---------------------	--------

### Product Type Features

Leg Style	SMD Pads
-----------	----------

Switch Connection Type	Printed Circuit Board
------------------------	-----------------------

Illuminated	Without
-------------	---------

Actuator Style	Round Actuator
----------------	----------------

### Contact Features

Contact Current Rating	50 mA
------------------------	-------

Contact Base Material	Stainless Steel
-----------------------	-----------------

Switch Contact Plating Material	Silver
---------------------------------	--------

### Industry Standards

IP Rating	IP67
-----------	------

### Electrical Characteristics

Operating Voltage	24 VDC
-------------------	--------

### Termination Features

Termination Method to PCB	Surface Mount
---------------------------	---------------

### Housing Features

Process Sealed	Yes
----------------	-----

### Usage Conditions

Operating Temperature Range	-35 – 85 °C
-----------------------------	-------------

### Other

EU RoHS Compliance	Compliant
--------------------	-----------

EU ELV Compliance	Compliant
-------------------	-----------

### Product Compliance

[For compliance documentation, visit the product page on TE.com>](#)

EU RoHS Directive 2011/65/EU	Compliant
------------------------------	-----------

EU ELV Directive 2000/53/EC	Compliant
-----------------------------	-----------

China RoHS 2 Directive MIIT Order No 32, 2016	No Restricted Materials Above Threshold
---	---

EU REACH Regulation (EC) No. 1907/2006	Current ECHA Candidate List: JUNE 2024 (241)
--	--



Candidate List Declared Against: JUNE 2024 (241)

Does not contain REACH SVHC

Halogen Content

Low Halogen - Br, Cl, F, I < 900 ppm per homogenous material. Also BFR/CFR/PVC Free

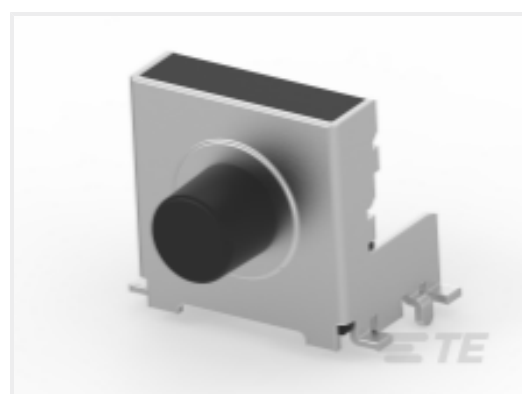
Solder Process Capability

Reflow solder capable to 245°C

Product Compliance Disclaimer

This information is provided based on reasonable inquiry of our suppliers and represents our current actual knowledge based on the information they provided. This information is subject to change. The part numbers that TE has identified as EU RoHS compliant have a maximum concentration of 0.1% by weight in homogenous materials for lead, hexavalent chromium, mercury, PBB, PBDE, DBP, BBP, DEHP, DIBP, and 0.01% for cadmium, or qualify for an exemption to these limits as defined in the Annexes of Directive 2011/65/EU (RoHS2). Finished electrical and electronic equipment products will be CE marked as required by Directive 2011/65/EU. Components may not be CE marked. Additionally, the part numbers that TE has identified as EU ELV compliant have a maximum concentration of 0.1% by weight in homogenous materials for lead, hexavalent chromium, and mercury, and 0.01% for cadmium, or qualify for an exemption to these limits as defined in the Annexes of Directive 2000/53/EC (ELV). Regarding the REACH Regulation, the information TE provides on SVHC in articles for this part number is based on the latest European Chemicals Agency (ECHA) 'Guidance on requirements for substances in articles' posted at this URL: <https://echa.europa.eu/guidance-documents/guidance-on-reach>

### Compatible Parts



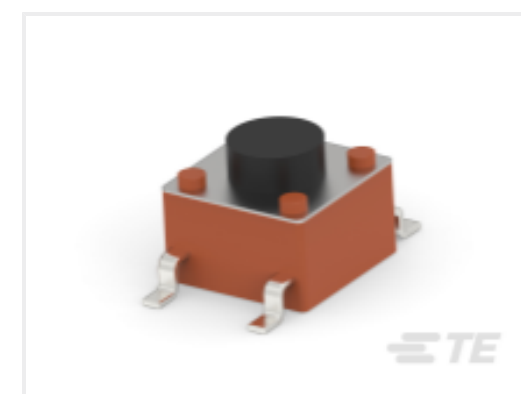
TE Part # 1571300-2  
TACT,RTANG,SMT,SEALED,GUID PIN



TE Part # 1825910-6  
FSM4JH=6MM TACT SWITCH, HIGH TEMP



TE Part # 2-1825910-7  
FSM14JH=6MM TACT SWITCH, HIGH TEMP

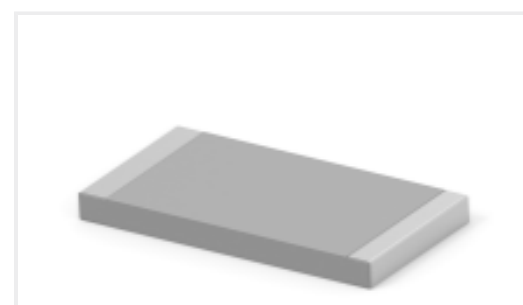


TE Part # 4-1437565-2  
FSM4JSMATR=TACT SWITCH 6X6MIL

### Customers Also Bought



TE Part #5380598-2  
RCR AU-SPR SN-CUP 018-040



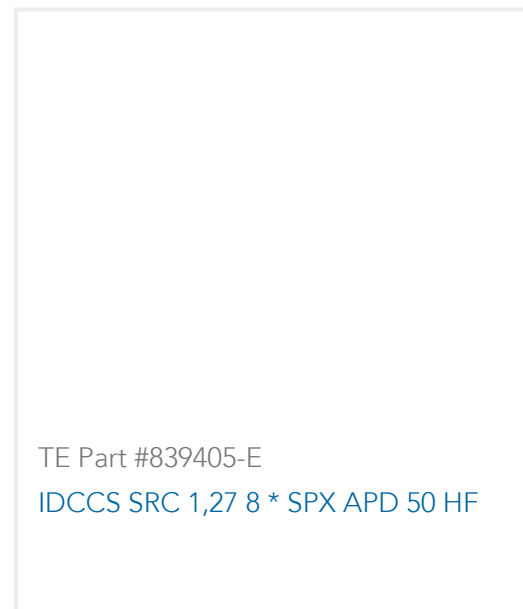
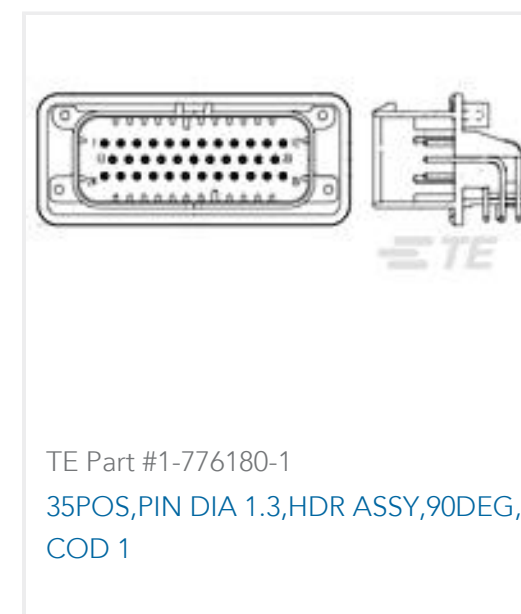
TE Part #3-2176331-7  
CRGP 2512 10K 1%



TE Part #2-1971895-3  
3P, RAST 5 Tab Header, THV



TE Part #1571300-2  
TACT,RTANG,SMT,SEALED,GUID PIN



## Documents

### Product Drawings

TACT,RTANG,SMT,SEALED,GUID PIN, T/R

English

### CAD Files

3D PDF

3D

Customer View Model

[ENG\\_CVM\\_CVM\\_1571300-3\\_A.2d\\_dxf.zip](#)

English

Customer View Model

[ENG\\_CVM\\_CVM\\_1571300-3\\_A.3d\\_igs.zip](#)

English

Customer View Model

[ENG\\_CVM\\_CVM\\_1571300-3\\_A.3d\\_stp.zip](#)

English

By downloading the CAD file I accept and agree to the [Terms and Conditions](#) of use.