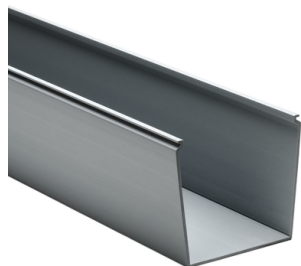


Specification Sheet

Part Number: 181-44009



Solid wall construction provides excellent coverage to keep wires clean.

Durable material protects wires from damage, with long-lasting performance.

Available standard colors complement or contrast in light and dark environments.

Optional covers snap on and off easily, and are provided with a non-slip lining that insures the covers remain in place during vibration.

Solid Wall Wiring Duct, 4" x 4", Non-Adhesive, PVC, Gray, 120ft /Carton

| | |
|---------------------|---|
| Article Number | 181-44009 |
| Type | SD4X4 |
| Color | Gray (GY) |
| Quantity Per | carton |
| Product Description | HellermannTyton Solid Wall Wiring Duct efficiently routes and protects wire. Solid wall wiring duct is designed for straight wire runs where breakouts are not required. Solid wall wiring duct is manufactured from high-impact, rigid PVC; comes in standard colors of white, gray and black; and is available in 6-foot lengths. |
| Short Description | Solid Wall Wiring Duct, 4" x 4", Non-Adhesive, PVC, Gray, 120ft /Carton |

| | |
|----------------------------------|-------------------------|
| Global Part Name | SD4X4-PVC-GY |
| Length L (Imperial) | 6.0 |
| Length L (Metric) | 1.83 |
| Fixation Method | Non-Adhesive |
| Width W (Imperial) | 4.0 |
| Width W (Metric) | 101.6 |
| Height H (Imperial) | 4.07 |
| Height H (Metric) | 103.40 |
| Mounting Hole Centers (Imperial) | 4.0 |
| Material | Polyvinylchloride (PVC) |
| Material Shortcut | PVC |
| Halogen Free | No |
| UV Resistant (Yes/No) | No |
| Use Conditions | For Indoor Use Only |
| Operating Temperature | +122°F (+50°C) |

| | |
|------------------------------|--|
| Reach Compliant (Article 33) | No |
| ROHS Compliant | Yes |
| Certification/Specification | EN 50085-1:2005 + A1:2013 CSA EN 50085-2-3_1A UL |
| UL Recognized (US) | Yes |
| Package Quantity (Imperial) | 120.0 |
| Package Quantity (Metric) | 36.58 |
| Customs Number | 3925900000 |

© 2025 HellermannTyton. All Rights Reserved.

[Contact Us](#)

[RoHS/WEEE Compliance](#)

[Disclaimer](#)

[Terms and Conditions](#)