

Specification Sheet

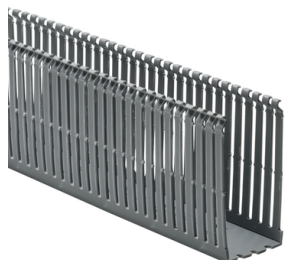
Part Number: 181-00648

Narrow fingers reduce fanning of wires to terminal blocks, providing a neater appearance.

Each finger features a double restriction to hold wires in the bottom portion of the duct, simplifying installation.

Mounting holes are uniform in size to those in slotted and solid wall duct but are provided every two inches to accommodate compact designs and provide ease of installation.

Nonpermanent adhesive allows repositioning prior to final installation.



High Density Slotted Wall Wiring Duct, 2" x 4", Adhesive, PVC, Gray, 120ft/Carton

Article Number 181-00648

Type SLHDA2X4

Color Gray (GY)

Quantity Per carton

Product Description HellermannTyton High-Density Slotted Wall Wiring Duct features narrow fingers equaling a 2-to-1 finger ratio compared to standard slotted wiring duct. With the narrow fingers, compact designs and components are more easily accommodated.

Short Description	High Density Slotted Wall Wiring Duct, 2" x 4", Adhesive, PVC, Gray, 120ft/Carton
Global Part Name	SLHDA2X4-PVC-GY
Length L (Imperial)	6.0
Length L (Metric)	1.83
Fixation Method	Adhesive
Width W (Imperial)	2.0
Width W (Metric)	50.8
Height H (Imperial)	4.07
Height H (Metric)	103.4
Mounting Hole Centers (Imperial)	2.0
Material	Polyvinylchloride (PVC)
Material Shortcut	PVC
Halogen Free	No
UV Resistant (Yes/No)	No

Use Conditions	For Indoor Use Only
Operating Temperature	+122°F (+50°C)
Reach Compliant (Article 33)	No
ROHS Compliant	Yes
Certification/Specification	CSA UL EN 50085-2-3_1A EN 50085-1:2005 + A1:2013
UL Recognized (US)	Yes
Package Quantity (Imperial)	120.0
Package Quantity (Metric)	36.58
Customs Number	3925900000

© 2025 HellermannTyton. All Rights Reserved.

[Contact Us](#)

[RoHS/WEEE Compliance](#)

[Disclaimer](#)

[Terms and Conditions](#)