

Specification Sheet

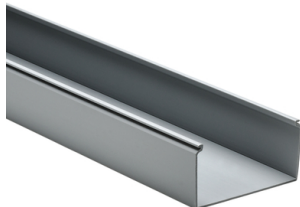
Part Number: 181-00185

Solid wall construction provides excellent coverage to keep wires clean.

Durable material protects wires from damage, with long-lasting performance.

Available standard colors complement or contrast in light and dark environments.

Optional covers snap on and off easily, and are provided with a non-slip lining that insures the covers remain in place during vibration.



Solid Wall Wiring Duct, 4" x 2", Non-Adhesive, PVC, Gray, 30ft/Box

Article Number 181-00185

Type SD4X2

Color Gray (GY)

Quantity Per box

Product Description HellermannTyton's Pro-Duct, Solid Wall wiring duct efficiently routes and protects wire and cable. Solid Wall wiring duct it designed for straight wire runs where break outs are not required. Pro-Duct, Solid Wall wiring duct is manufactured from high impact, rigid PVC, comes in standard colors of white, gray and black, and is available in 6 foot lengths.

Short Description Solid Wall Wiring Duct, 4" x 2", Non-Adhesive, PVC, Gray, 30ft/Box

Global Part Name	SD4X2-PVC-GY
Length L (Imperial)	6.0
Length L (Metric)	1.83
Width W (Imperial)	4.0
Width W (Metric)	101.6
Height H (Imperial)	2.07
Height H (Metric)	52.6
Mounting Hole Centers (Imperial)	4.0
Material	Polyvinylchloride (PVC)
Material Shortcut	PVC
Halogen Free	No
UV Resistant (Yes/No)	No
Use Conditions	For Indoor Use Only
Operating Temperature	+122°F (+50°C)
Reach Compliant (Article 33)	No

ROHS Compliant	Yes
Certification/Specification	EN 50085-1:2005 + A1:2013 CSA EN 50085-2-3_1A UL
UL Recognized (US)	Yes
Package Quantity (Imperial)	30.0
Package Quantity (Metric)	9.14
Customs Number	3925900000

© 2025 HellermannTyton. All Rights Reserved.

[Contact Us](#)

[RoHS/WEEE Compliance](#)

[Disclaimer](#)

[Terms and Conditions](#)