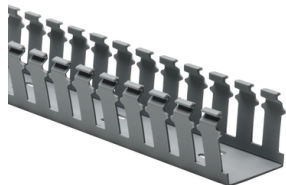


Specification Sheet

Part Number: 181-22032



Strong fingers prevent unwanted breaking.

Restricted opening prevents unintended removal of wires and permits any individual wire to be traced without disconnection.

Supplied with mounting holes to streamline installation.

Optional covers enhance protection and appearance.

Slotted Wall Wiring Duct, 2" x 2", Adhesive, PVC, Gray, 120ft /Carton

Article Number 181-22032

Type SLA2X2

Color Gray (GY)

Quantity Per carton

Product Description HellermannTyton Slotted Wall Duct features breakaway fingers that provide additional access for wire leads. Each section of the duct is provided with two score lines. The upper score line is used to break away fingers when a wider opening is required. The lower score line allows the sidewall to be smoothly cut for joints and Ts. Pressure-sensitive, rubber-based adhesive backing aids in temporary positioning.

Short Description Slotted Wall Wiring Duct, 2" x 2", Adhesive, PVC, Gray, 120ft /Carton

| | |
|----------------------------------|-------------------------|
| Global Part Name | SLA2X2-PVC-GY |
| Length L (Imperial) | 6.0 |
| Length L (Metric) | 1.83 |
| Fixation Method | Adhesive |
| Width W (Imperial) | 2.0 |
| Width W (Metric) | 50.8 |
| Height H (Imperial) | 2.07 |
| Height H (Metric) | 52.6 |
| Mounting Hole Centers (Imperial) | 4.0 |
| Material | Polyvinylchloride (PVC) |
| Material Shortcut | PVC |
| Halogen Free | No |
| UV Resistant (Yes/No) | No |
| Use Conditions | For Indoor Use Only |
| Operating Temperature | +122°F (+50°C) |

| | |
|------------------------------|--|
| Reach Compliant (Article 33) | No |
| ROHS Compliant | Yes |
| Certification/Specification | UL EN 50085-2-3_1A CSA EN 50085-1:2005 + A1:2013 |
| UL Recognized (US) | Yes |
| Package Quantity (Imperial) | 120.0 |
| Package Quantity (Metric) | 36.58 |
| Customs Number | 3925900000 |

© 2025 HellermannTyton. All Rights Reserved.

[Contact Us](#)

[RoHS/WEEE Compliance](#)

[Disclaimer](#)

[Terms and Conditions](#)