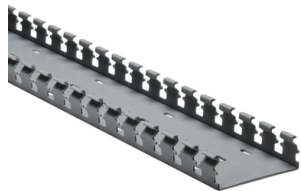


Specification Sheet

Part Number: 181-00585



Strong fingers prevent unwanted breaking.

Restricted opening prevents unintended removal of wires and permits any individual wire to be traced without disconnection.

Supplied with mounting holes to streamline installation.

Optional covers enhance protection and appearance.

Slotted Wall Wiring Duct, 3" x 1", Adhesive, PVC, Gray, 120ft/Carton

Article Number 181-00585

Type SLA3X1

Color Gray (GY)

Quantity Per carton

Product Description HellermannTyton Slotted Wall Duct features breakaway fingers that provide additional access for wire leads. Each section of the duct is provided with two score lines. The upper score line is used to break away fingers when a wider opening is required. The lower score line allows the sidewall to be smoothly cut for joints and Ts. Pressure-sensitive, rubber-based adhesive backing aids in temporary positioning.

Short Description Slotted Wall Wiring Duct, 3" x 1", Adhesive, PVC, Gray, 120ft/Carton

Global Part Name	SLA3X1-PVC-GY
Length L (Imperial)	6.0
Length L (Metric)	1.83
Fixation Method	Adhesive
Width W (Imperial)	3.0
Width W (Metric)	76.2
Height H (Imperial)	1.06
Height H (Metric)	26.90
Mounting Hole Centers (Imperial)	4.0
Material	Polyvinylchloride (PVC)
Material Shortcut	PVC
Halogen Free	No
UV Resistant (Yes/No)	No
Use Conditions	For Indoor Use Only
Operating Temperature	+122°F (+50°C)

Reach Compliant (Article 33)	No
ROHS Compliant	Yes
Certification/Specification	EN 50085-2-3_1A UL EN 50085-1:2005 + A1:2013 CSA
UL Recognized (US)	Yes
Package Quantity (Imperial)	120.0
Package Quantity (Metric)	36.58
Customs Number	3925900000

© 2025 HellermannTyton. All Rights Reserved.

[Contact Us](#)

[RoHS/WEEE Compliance](#)

[Disclaimer](#)

[Terms and Conditions](#)