

Specification Sheet

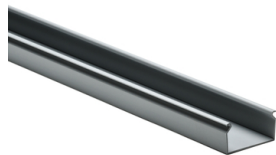
Part Number: 181-21001

Solid wall construction provides excellent coverage to keep wires clean.

Durable material protects wires from damage, with long-lasting performance.

Available standard colors complement or contrast in light and dark environments.

Optional covers snap on and off easily, and are provided with a non-slip lining that insures the covers remain in place during vibration.



Solid Wall Wiring Duct, 2" x 1", Non-Adhesive, PVC, Gray, 120ft/Carton

Article Number 181-21001

Type SD2X1

Color Gray (GY)

Quantity Per carton

Product Description HellermannTyton Solid Wall Wiring Duct efficiently routes and protects wire. Solid wall wiring duct is designed for straight wire runs where breakouts are not required. Solid wall wiring duct is manufactured from high-impact, rigid PVC; comes in standard colors of white, gray and black; and is available in 6-foot lengths.

Short Description Solid Wall Wiring Duct, 2" x 1", Non-Adhesive, PVC, Gray, 120ft/Carton

Global Part Name	SD2X1-PVC-GY
Length L (Imperial)	6.0
Length L (Metric)	1.83
Fixation Method	Non-Adhesive
Width W (Imperial)	2.0
Width W (Metric)	50.8
Height H (Imperial)	1.06
Height H (Metric)	26.9
Mounting Hole Centers (Imperial)	4.0
Material	Polyvinylchloride - rigid extrusion grade (PVC)
Material Shortcut	PVC
Halogen Free	No
UV Resistant (Yes/No)	No
Use Conditions	For Indoor Use Only
Operating Temperature	+122°F (+50°C)

Reach Compliant (Article 33)	No
ROHS Compliant	Yes
Certification/Specification	EN 50085-2-3_1A UL EN 50085-1:2005 + A1:2013 CSA
UL Recognized (US)	Yes
Package Quantity (Imperial)	120.0
Package Quantity (Metric)	36.58
Customs Number	3925900000

© 2025 HellermannTyton. All Rights Reserved.

[Contact Us](#)

[RoHS/WEEE Compliance](#)

[Disclaimer](#)

[Terms and Conditions](#)