

Specification Sheet

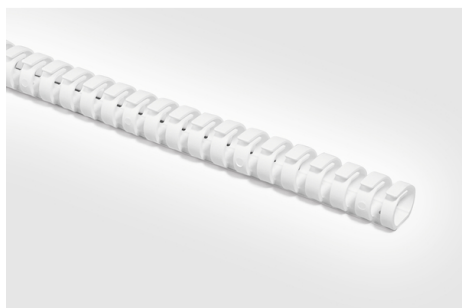
Part Number: 164-21008

Highly flexible design saves space and allows bending at angles above 90 degrees, making it well suited for confined spaces.

Overlapping circular fingers eliminate need for a separate cover to retain wires and make insertion and removal of wires fast and easy.

Smooth finger edges eliminate abrasion that can damage wires.

Slotted finger pattern provides easy visibility to wires and allows heat to dissipate.



HelaDuct Flex20 Wiring Duct, 0.78" Dia., 19.7" Length, Non-Adhesive, PP, White, 70/ctn

Article Number 164-21008

Type HelaDuct Flex20

Color White (WH)

Quantity Per box

Product Description HelaDuct Flex provides an extremely flexible method of routing wires in restricted-space applications. Smooth, overlapping, circular finger pattern reduces wire abrasion and eliminates the need for a separate cover in order to maintain wires when installed at angles greater than 90 degrees. Quick and easy inspection, access and removal of wires reduces installation and maintenance time. Available with adhesive foam strip for temporary positioning or non-adhesive back.

Short Description	HelaDuct Flex20 Wiring Duct, 0.78" Dia., 19.7" Length, Non-Adhesive, PP, White, 70/ctn
Global Part Name	HelaDuct Flex20-PP-WH
Length L (Imperial)	19.7
Length L (Metric)	500
Fixation Method	Screw Mounting
Width W (Imperial)	0.94
Width W (Metric)	24.0
Height H (Imperial)	0.94
Height H (Metric)	24.0
Inner Diameter D (Imperial)	0.78
Inner Diameter D (Metric)	20.0
Diameter D (Imperial)	0.78
Diameter D (Metric)	20
Nominal Diameter (Imperial)	0.78
Nominal Diameter (Metric)	20

Material	Polypropylene (PP)
Material Shortcut	PP
Flammability	UL 94 V-0 (excluding adhesive)
Halogen Free	Yes
UV Resistant (Yes/No)	No
Use Conditions	For Indoor Use Only
Operating Temperature	-4°F to +158°F (-20°C to +70°C)
Reach Compliant (Article 33)	Yes
ROHS Compliant	Yes
UL Recognized (US)	Yes
UL Recognized (US and Canada)	Yes
Package Quantity (Imperial)	70
Package Quantity (Metric)	70
Customs Number	3925900000

[Contact Us](#)

[RoHS/WEEE Compliance](#)

[Disclaimer](#)

[Terms and Conditions](#)